



35, Farne Way, Royal Wootton Bassett, SN4 8LX

Guide Price £195,000

richard james

Village & Country Homes

richard
james



richard
james



richard

Farne Way

Royal Wootton Bassett

Leasehold



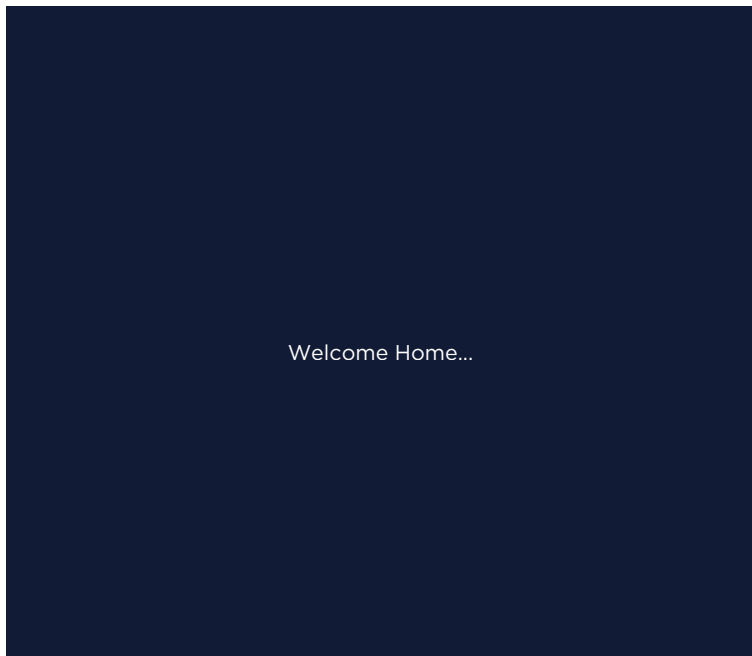
Step into this charming ground floor maisonette offering two bedrooms, a generous conservatory, and both front and rear gardens – a rare find in the ever-popular Woodshaw area of Royal Wootton Bassett.

Positioned at the end of a quiet cul-de-sac, the property enjoys a peaceful setting with excellent privacy. Inside, you'll find a welcoming entrance porch leading to a bright living/dining space, a separate kitchen with direct access to the conservatory and rear garden, two well-sized bedrooms, and a modern bathroom.

The rear garden is fully enclosed with gated access to the parking area, while the front garden adds kerb appeal and greenery to the approach.

This home benefits from uPVC double glazing, gas central heating via a combination boiler, and comes with an impressive 956 years remaining on the lease. The annual ground rent is just £25 with no service charges, making this an appealing, cost-effective choice.

Ideal for those seeking a home with outdoor space and a private feel, this maisonette offers excellent value in a desirable location.



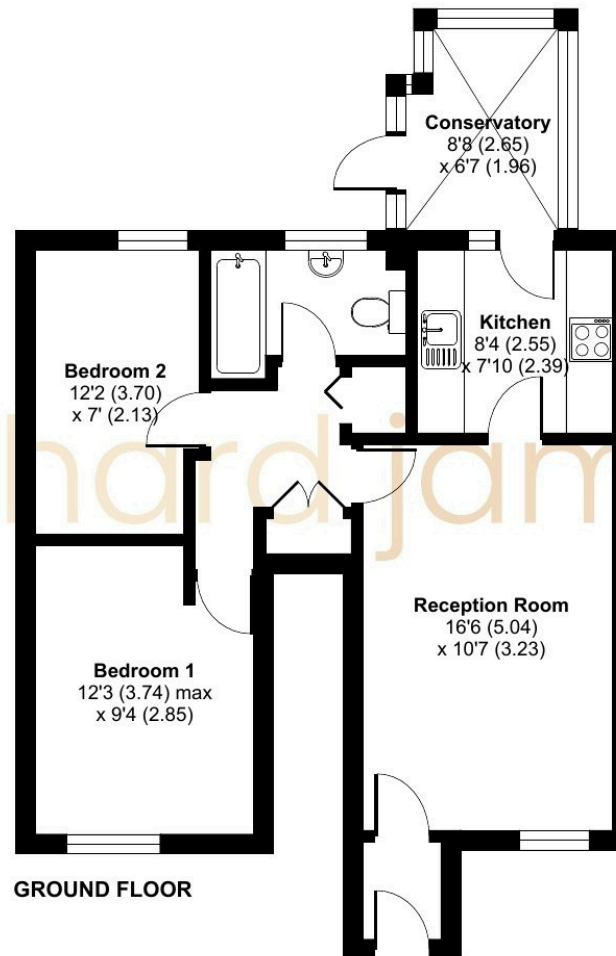




Floorplan

Approximate Area = 633 sq ft / 58.8 sq m

For identification only - Not to scale



GROUND FLOOR

01793 855 117

rwb@richardjames.uk

139 High Street | Royal Wootton Bassett | SN4 7AY

richard james

richardjames.uk