



4, Royal Mews, Royal Wootton Bassett, SN4 7RS

Guide Price £290,000

richard james

Village & Country Homes

richard
james



Royal Mews

Royal Wootton Bassett

Freehold



Situated in the small and private setting of Royal Mews, just a five-minute walk from Royal Wootton Bassett's High Street, this extended three-bedroom townhouse offers modern, spacious living arranged over three floors and is available with no onward chain.

The ground floor comprises an entrance hallway, cloakroom, a well-equipped kitchen with integrated appliances, and a welcoming living room opening onto a conservatory with underfloor heating, a glass roof, and French doors leading to the rear garden.

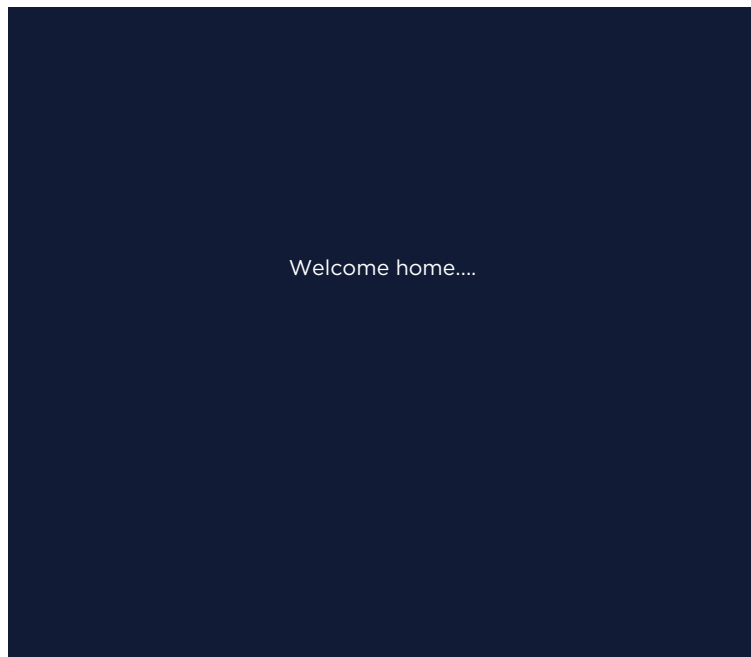
On the first floor are two generous double bedrooms and a family bathroom, while the top floor provides the main bedroom suite, complete with a dormer window offering distant views, an en-suite shower room, and a walk-in wardrobe.

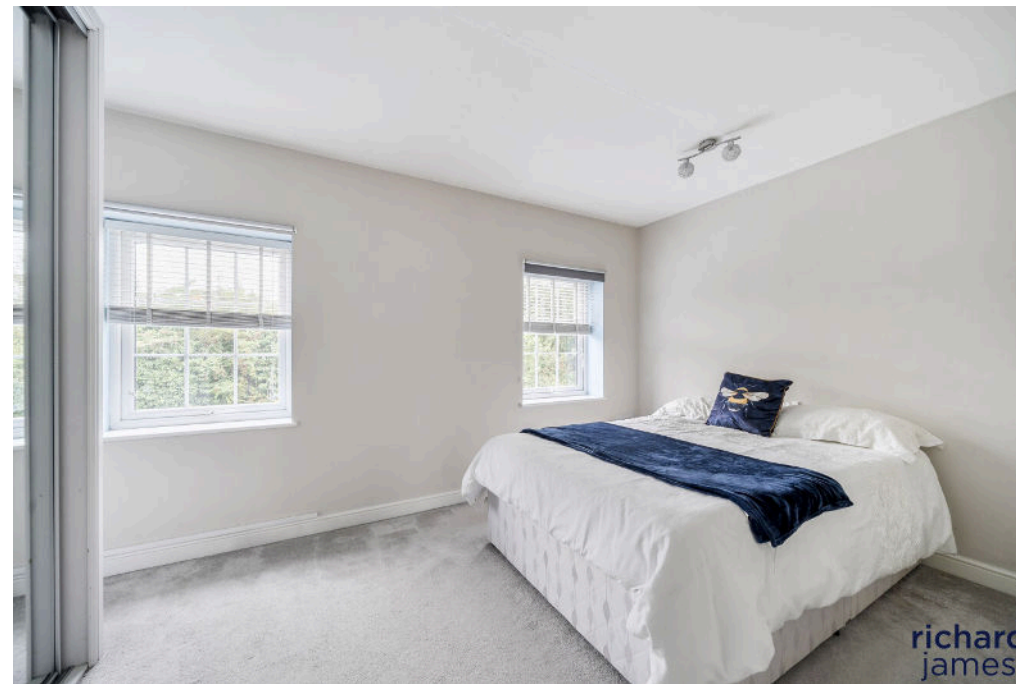
The rear garden enjoys a south-westerly aspect, designed for easy upkeep with a patio area, powered shed, and gated access. To the front is a shared, privately managed driveway providing two allocated parking spaces.

Further benefits include gas central heating via a combination boiler and uPVC double glazing throughout.

This is an ideal opportunity to secure a well-presented, modern home in a convenient and sought-after location.

Welcome Home...









Floorplan

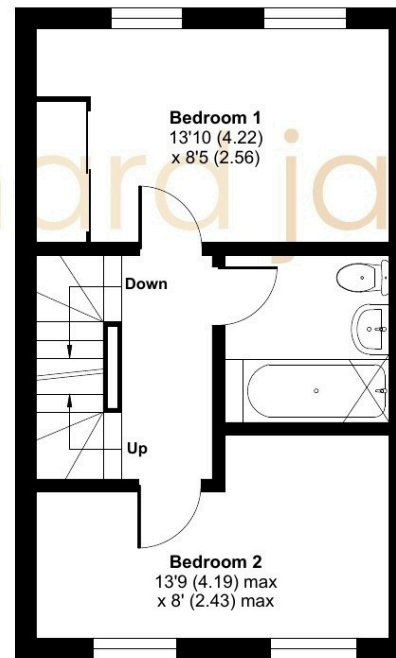
Approximate Area = 1002 sq ft / 93 sq m
Limited Use Area(s) = 9 sq ft / 0.8 sq m
Total = 1011 sq ft / 93.8 sq m

For identification only - Not to scale

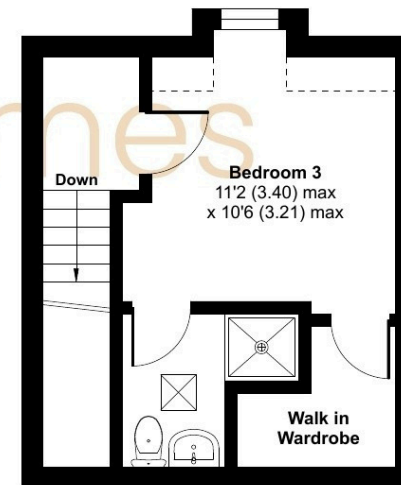
Denotes restricted
head height



GROUND FLOOR



FIRST FLOOR



SECOND FLOOR



Floor plan produced in accordance with RICS Property Measurement 2nd Edition, Incorporating International Property Measurement Standards (IPMS2 Residential). © nichecom 2025. Produced for Richard James Estate Agents Ltd. REF: 1340695

01793 855 117

rwb@richardjames.uk

139 High Street | Royal Wootton Bassett | SN4 7AY

richard james

richardjames.uk