



11, Roundhouse Drive, Swindon, SN4 8FL

Guide Price £240,000

richard james

Village & Country Homes

richard
james



Roundhouse Drive

Royal Wootton Bassett

Freehold

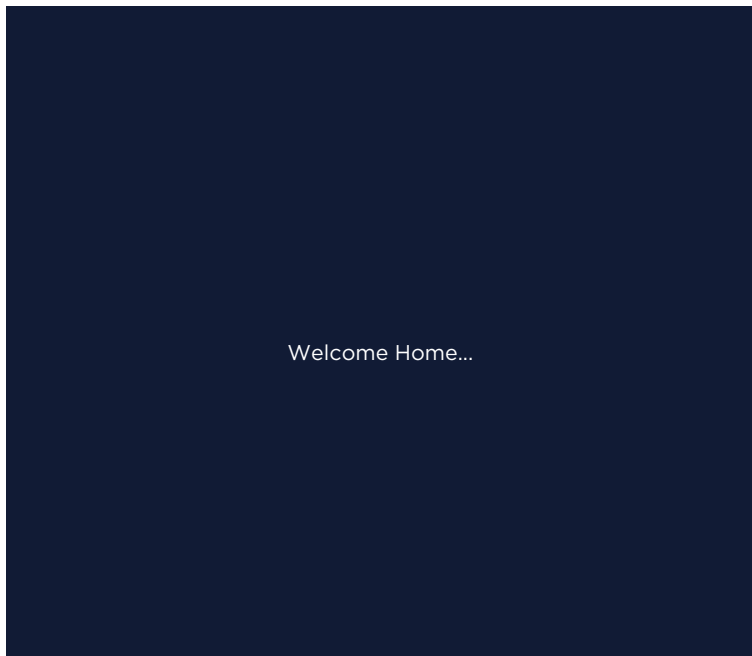


A rare opportunity to purchase a detached two-bedroom freehold coach house with a private rear garden, situated at the end of a quiet, block-paved cul-de-sac within a modern and sought-after development in Royal Wootton Bassett.

This attractive home features a garage with internal access, driveway parking, and a useful under-stair utility cupboard. The main living space includes a bright and spacious lounge/diner, a stylish kitchen fitted with an integrated oven and gas hob, two well-proportioned bedrooms, and a modern bathroom.

To the rear, accessed either through the garage or via a side gate, is a generous and enclosed private garden, laid to lawn and gravel, complete with a timber garden shed and close board fencing for added privacy.

Additional benefits include gas radiator central heating and uPVC double glazing throughout. A well-presented and rarely available property that must be viewed to be fully appreciated.







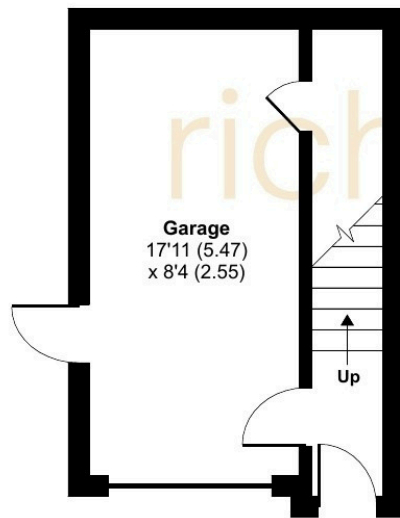
richard
james



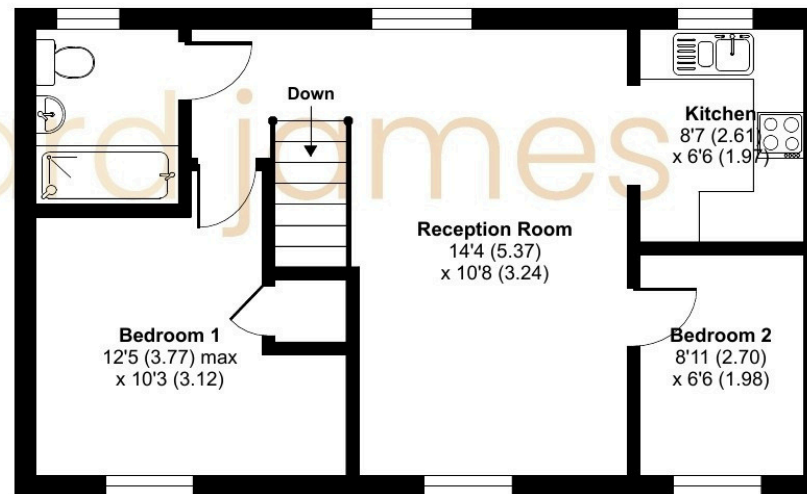
Floorplan

Approximate Area = 754 sq ft / 70 sq m (Includes garage)

For identification only - Not to scale



GROUND FLOOR



FIRST FLOOR

01793 855 117

rwb@richardjames.uk

139 High Street | Royal Wootton Bassett | SN4 7AY

richard james

richardjames.uk