

richard
james



10 Sywell Road

10, Sywell Road, Shrivenham, Swindon, SN6 8FF

Offers in excess of
£275,000



Sywell Road

FREEHOLD

Council Tax Band - C | EPC Rating - B

 2  1  1

Tucked away in a peaceful no-through-road, just a short stroll from Shrivenham's vibrant High Street, this beautifully presented two-bedroom home offers a perfect balance of comfort, practicality, and convenience.

The ground floor comprises a spacious living room, a convenient cloakroom/WC, and a bright kitchen/dining room to the front—ideal for entertaining and day-to-day living. The lounge opens out via a rear door to the garden, making indoor-outdoor living effortless.

Upstairs, the property features two well-proportioned double bedrooms, including a particularly generous main bedroom, and a modern family bathroom with three-piece suite.



Charlie Berry
Branch Manager

01793 311 043
07470 489 292

charlieberry@richardjames.uk



KITCHEN
DINER





Externally, the home enjoys allocated parking for two vehicles to the front, side gated access, and an enclosed rear garden laid out in two levels with a patio area, lawn, and wooden shed—ideal for alfresco dining or relaxing in privacy.

With its excellent location, well-planned accommodation, and thoughtful outdoor space, this property is ideally suited to first-time buyers, downsizers, or investors alike.

LOUNGE

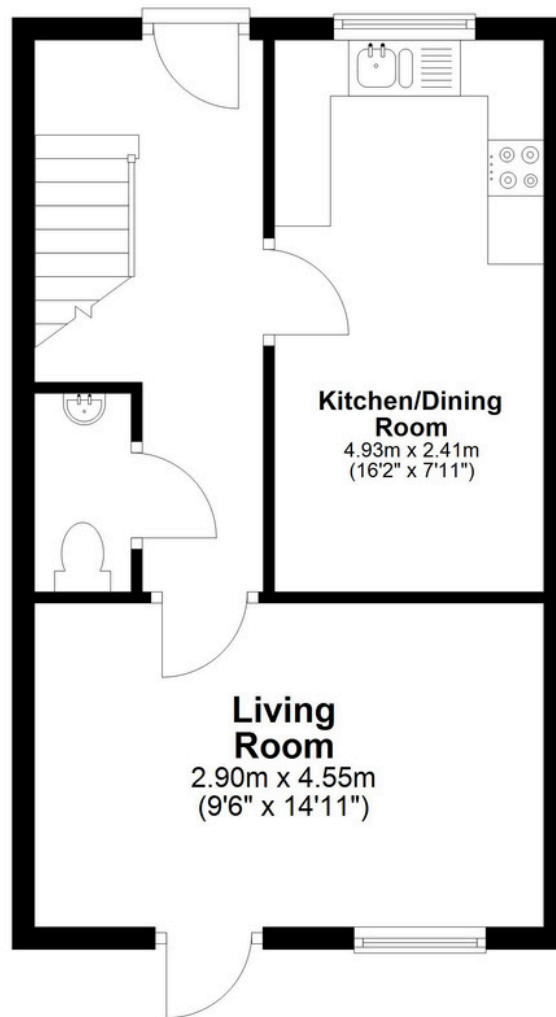




Shrivenham is a picturesque Oxfordshire village known for its charming High Street, historic buildings, and strong community spirit. Surrounded by scenic countryside, it offers a range of local amenities, pubs, shops, and cafes, as well as excellent road links to Swindon, Oxford, and the M4.

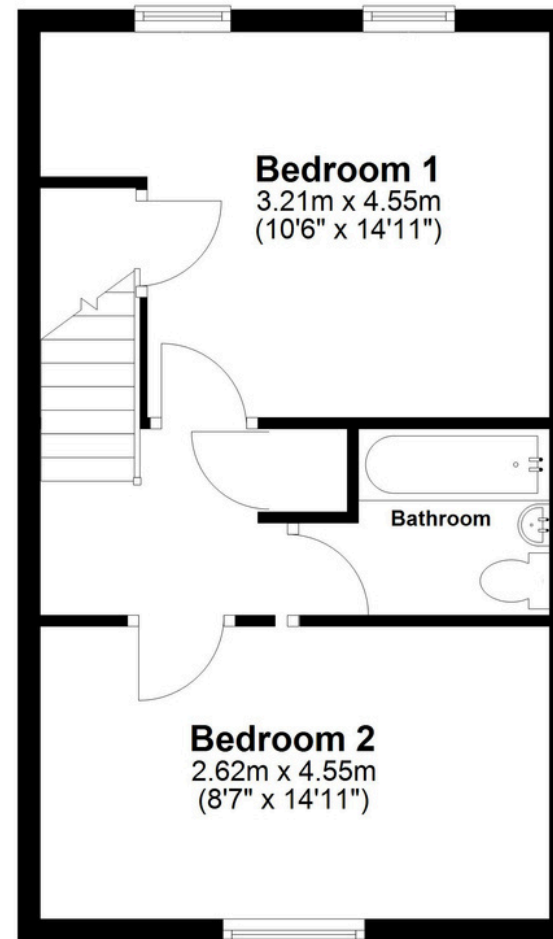
Ground Floor

Approx. 36.1 sq. metres (388.6 sq. feet)



First Floor

Approx. 36.1 sq. metres (388.6 sq. feet)



Total area: approx. 72.2 sq. metres (777.1 sq. feet)

01793 765 292

highworth@richardjames.uk

1 Swindon Road | Highworth | SN6 7AH

richardjames.uk



@rjestateagent