

richard
james



5 Sword Gardens

Swindon, SN5 8ZE

Asking Price
£569,995



Sword Gardens

Swindon

Freehold | EPC Rating - C

 5  2  2

This well presented four bedroom detached home, built by Bloor Homes to their Oxbury design is well positioned in the ever popular Rushy Platt area and would be perfect for a family due to its good condition throughout, its four good sized bedrooms, its generous plot and its scope to extend and modernise.

This property is well located in the sought after Rushy Platt area and offers easy access to Old Town, J16 of the M4 and Swindon Train Station.



Jack Rogers
Sales Valuer

01793 311 030
jackrogers@richardjames.uk



Scan here

richard

Light and
Airy Space





The ground floor living accommodation comprise; light airy entrance hall, a large living room, the dining room, large conservatory, a kitchen/breakfast room, utility room and W.C.

The first floor offers; first floor landing, a large main bedroom with fitted wardrobes, dressing area and en-suite shower room, bedroom two with fitted wardrobes, bedroom three also with fitted wardrobes, bedroom four and a large family bathroom.

Private
Garden



richard
iam



To the rear is an enclosed rear garden with a patio leading to good sized lawn and a further patio seating and barbecue area, there is also side gated access.

To the front is a detached double garage accessed via up and over doors offering power and lighting plus a large driveway offering parking for multiple vehicles.

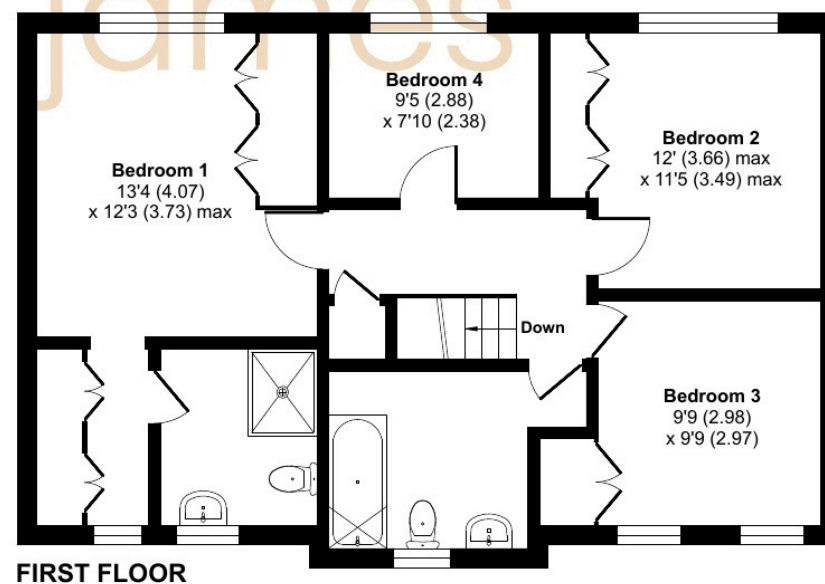
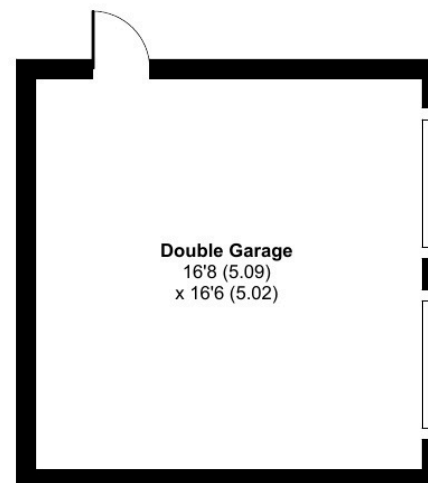
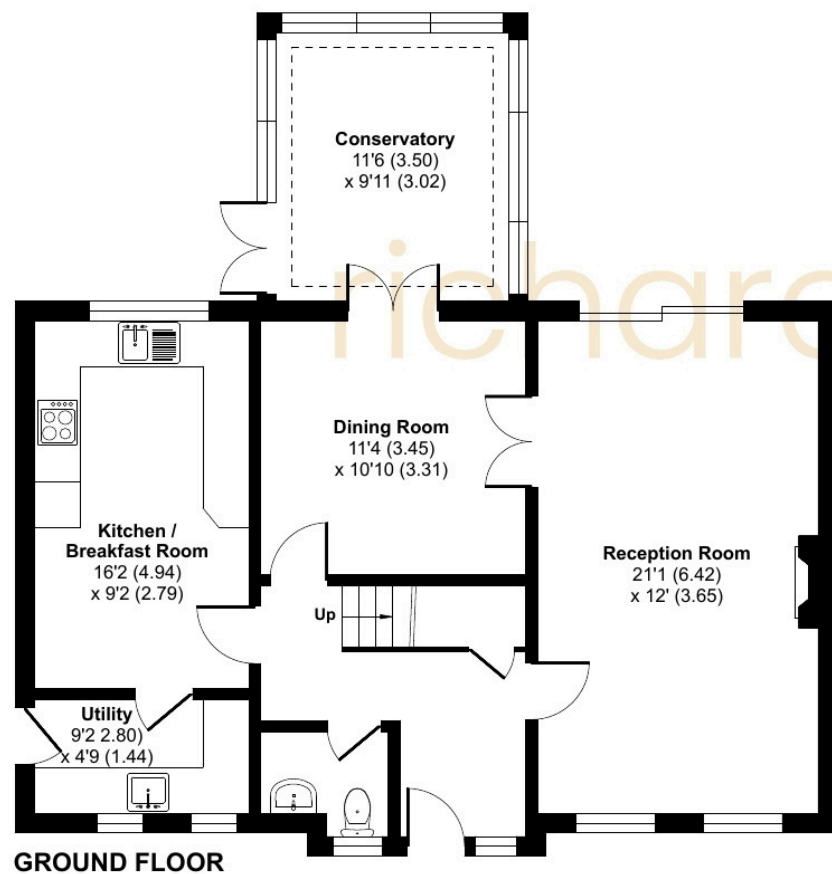


Approximate Area = 1547 sq ft / 143.7 sq m

Garage = 275 sq ft / 25.5 sq m

Total = 1822 sq ft / 169.2 sq m

For identification only - Not to scale



01793 520 720

oldtown@richardjames.uk

101 Victoria Road | Old Town | Swindon | SN1 3BD

richardjames.uk



@rjestateagent