



30, Greenfields, Lyneham, SN15 4PA

Guide Price £205,000

richard james

Village & Country Homes

richard
james



Greenfields

Lyneham



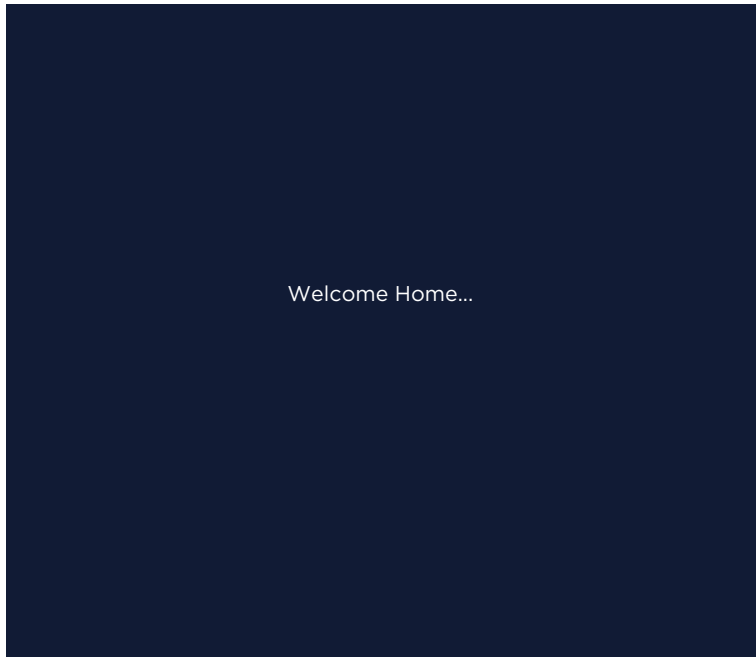
This beautifully presented, two-year-old home, nestled in the peaceful Greenfields Estate in Lyneham, offers an ideal blend of modern living and countryside charm.

The “Tredegar Contemporary” design features bright, spacious interiors, starting with a welcoming entrance hall that leads into a generous 17’8” lounge. This open-plan living area flows effortlessly into a dining space, which in turn leads to a sleek, contemporary kitchen equipped with integrated appliances. Two double bedrooms provide comfort, with the master offering a large walk-through dressing area that opens into a spacious en-suite shower room. A stylish family bathroom completes the interior.

The property is set in delightful, low-maintenance gardens, with a well-designed patio area offering the perfect space for outdoor relaxation. A tandem driveway with space for two cars ensures both convenience and privacy.

Greenfields Estate is a charming, licensed residential park exclusively for the over fifties, surrounded by open countryside and stunning views. Local amenities, including a pharmacy, Tesco, and Co-op, are within walking distance, while nearby bus routes offer easy access to Chippenham, Royal Wootton Bassett, and Swindon.

Residents can enjoy the peaceful, pet-friendly environment, with the option to bring dogs subject to site approval.











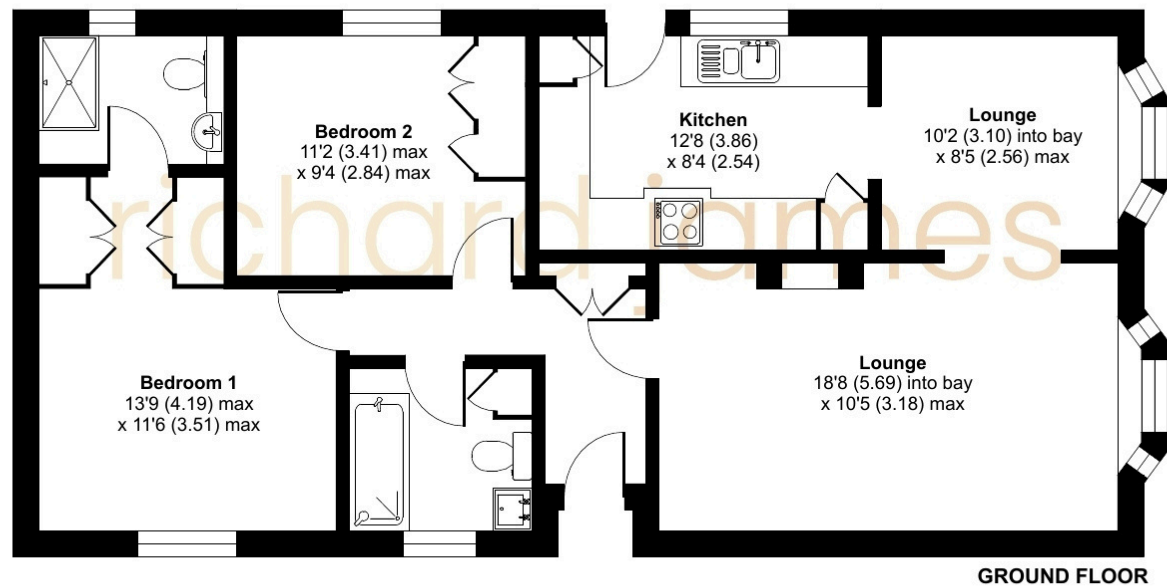


richard
james

Floorplan

Approximate Area = 796 sq ft / 74 sq m

For identification only - Not to scale



01793 855 117

rwb@richardjames.uk

139 High Street | Royal Wootton Bassett | SN4 7AY

richard james

richardjames.uk