

richard  
james



***24 Summerhouse Road***

Wroughton, Swindon, SN4 9HZ

Guide Price  
***£315,000***



# Summerhouse Road

Wroughton

Freehold | EPC Rating - D

 2
  1
  2

Located in the ever-popular village of Wroughton, this attractive two-bedroom semi-detached bungalow occupies a generous corner plot and is ideally situated within walking distance of local amenities, including the village surgery, convenient bus routes, and a thriving community atmosphere.

The accommodation comprises two well-proportioned bedrooms, a comfortable lounge, and a separate dining area, a fitted kitchen, and a recently refitted modern shower room. A full-length conservatory at the rear provides additional living space and offers lovely views over the private garden—perfect for year-round enjoyment.



**Alex Hornby**  
Director

**01793 311 013**  
**07889 366 134**

[alexhornby@richardjames.uk](mailto:alexhornby@richardjames.uk)



Scan here



Bright and  
Airy





Externally, the property boasts a larger-than-average garden thanks to its corner position, offering great potential for keen gardeners or further extension (subject to planning).

To the front, there's ample driveway parking for several vehicles.

Large  
Private  
Garden





Further benefits include gas central heating, double glazing throughout, and a quiet yet well-connected location.

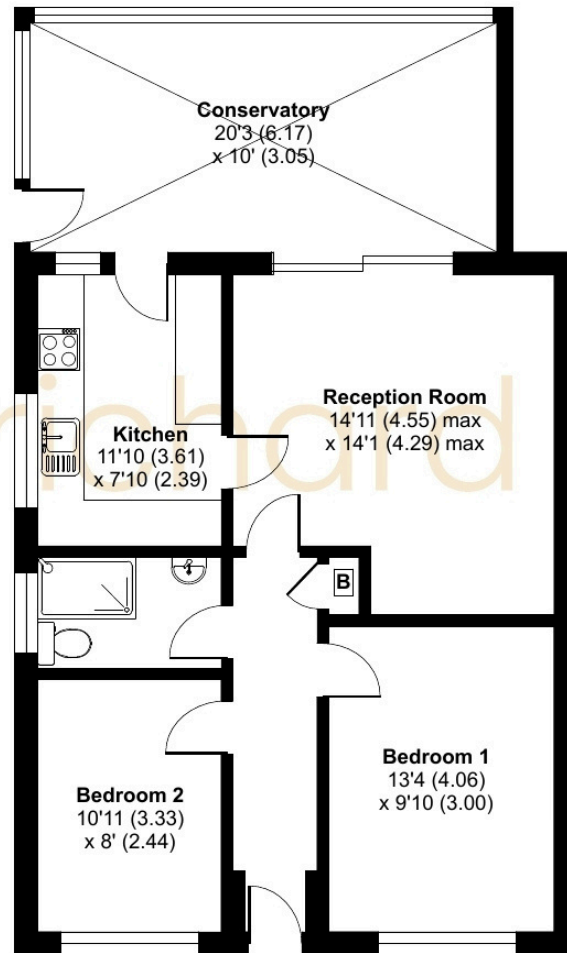
With very few bungalows coming available in this area, early viewing is highly recommended to avoid disappointment.

Approximate Area = 868 sq ft / 80.6 sq m

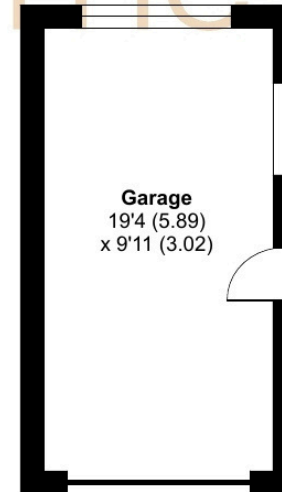
Garage = 193 sq ft / 17.9 sq m

Total = 1061 sq ft / 98.5 sq m

For identification only - Not to scale



GROUND FLOOR



**01793 814 542**

wroughton@richardjames.uk

80 High Street | Wroughton | SN4 9JZ

**richardjames.uk**



@rjestateagent