

richard
james



Lalique Close

Tadpole Garden Village, SN25 2TS

Guide Price
£500,000 - £510,000



Lalique Close

Tadpole Garden Village, SN25 2TS

Freehold | EPC Rating - B

 4  3  3

Nestled in the sought-after Tadpole Garden Village, this immaculate four-bedroom detached home offers spacious, contemporary living with a beautifully landscaped garden and high-quality finishes throughout. Perfectly suited for modern family life, this turn-key property is ready to move into and enjoy.

Upon entering, you're welcomed into a bright and airy hallway that leads to a convenient downstairs WC and a separate study—ideal for working from home or quiet reading. The heart of the home is the stunning open-plan kitchen, dining, and living area, designed for both everyday living and entertaining. This versatile space is complemented by a separate, generously sized living room, perfect for relaxing evenings with family and friends.

Upstairs, the home continues to impress with four spacious double bedrooms. The luxurious principal bedroom features stylish built-in wardrobes and a sleek ensuite shower room. A second double bedroom also benefits from its own ensuite, offering comfort and privacy for guests or older children. Two further double bedrooms provide ample space for family living or flexible use, such as a playroom or additional office.

Beau Harmer
Sales Negotiator

01793 311 044

beauharmer@richardjames.uk



Scan here

   @rjestateagent

Open plan
kitchen
diner





Externally, the landscaped rear garden offers a tranquil retreat, ideal for outdoor dining and summer gatherings. Side access leads to a detached garage and driveway, providing ample off-street parking and additional storage.

This exceptional home combines generous proportions with thoughtful design and is located within easy reach of local amenities, green spaces, and transport links. Early viewing is highly recommended to fully appreciate all this property has to offer.

Master
bedroom
with
ensuite





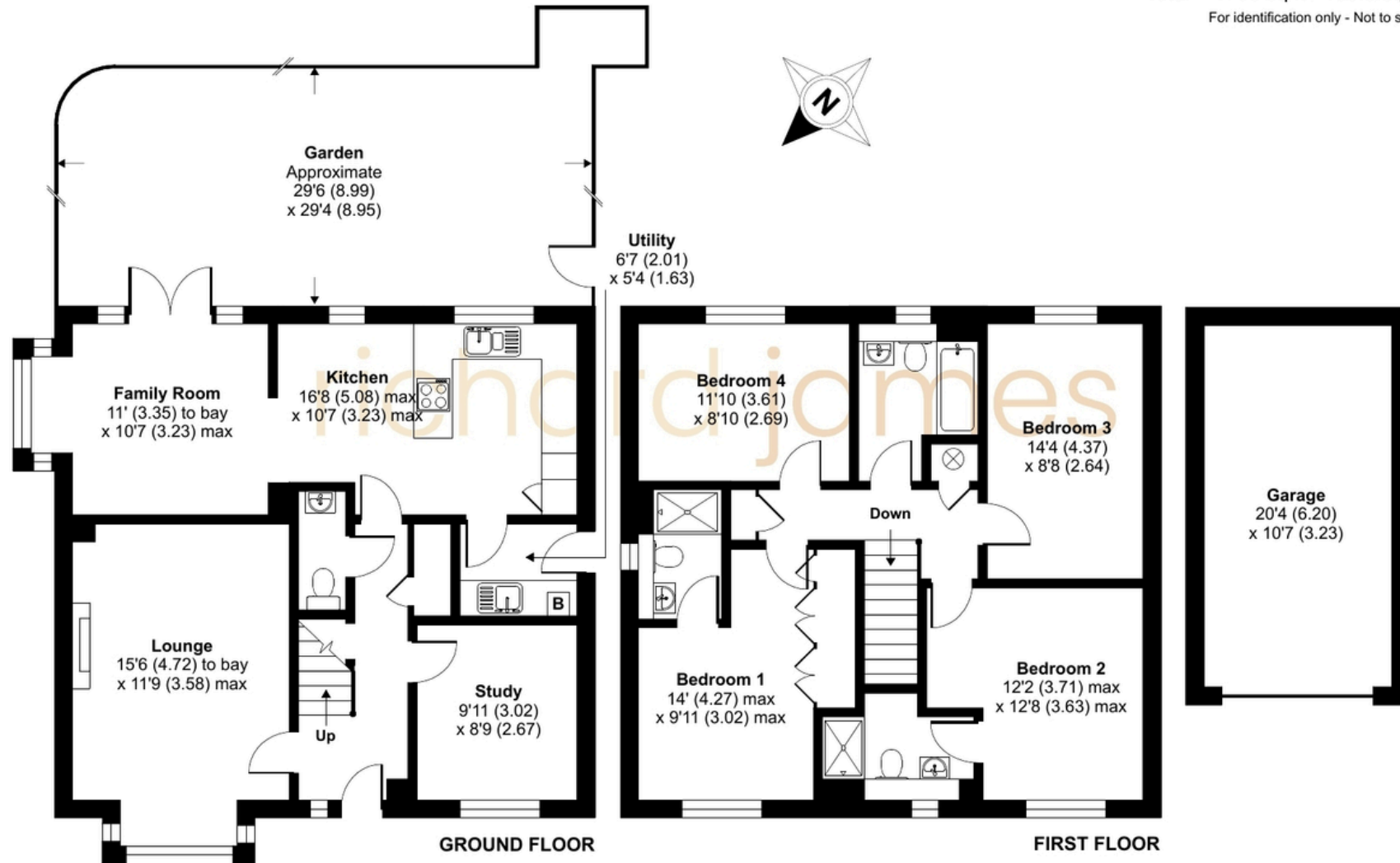


Approximate Area = 1547 sq ft / 143.7 sq m

Garage = 216 sq ft / 20.1 sq m

Total = 1763 sq ft / 163.8 sq m

For identification only - Not to scale



Floor plan produced in accordance with RICS Property Measurement 2nd Edition, Incorporating International Property Measurement Standards (IPMS2 Residential). © nitchcom 2025. Produced for Richard James Estate Agents Ltd. REF: 1301422

01793 261 262

northswindon@richardjames.uk

Gemini House | Hargreaves Road | Swindon | SN25 5AZ

richardjames.uk

   @rjestateagent