

richard
james



147 Croft Road

Swindon, SN1 4DS

Guide Price

£310,000-£330,000



Croft Road

Swindon

Freehold | EPC Rating - D

 3  1  1

Situated in the sought-after Croft Road area, nestled between Wroughton and Old Town, this property offers over 1000sqft of accommodation across two generous floors. The home presents a fantastic opportunity for buyers looking to modernise and personalise a property to their own taste.

The accommodation briefly comprises an entrance porch, a bright and airy living room with an attractive bay window, and a large open-plan kitchen/dining/family room ideal for modern family living. Additional ground floor features include a practical utility room and a downstairs cloakroom.



Alex Hornby
Director

01793 311 013
07889 366 134

alexhornby@richardjames.uk



Scan here

Open Plan



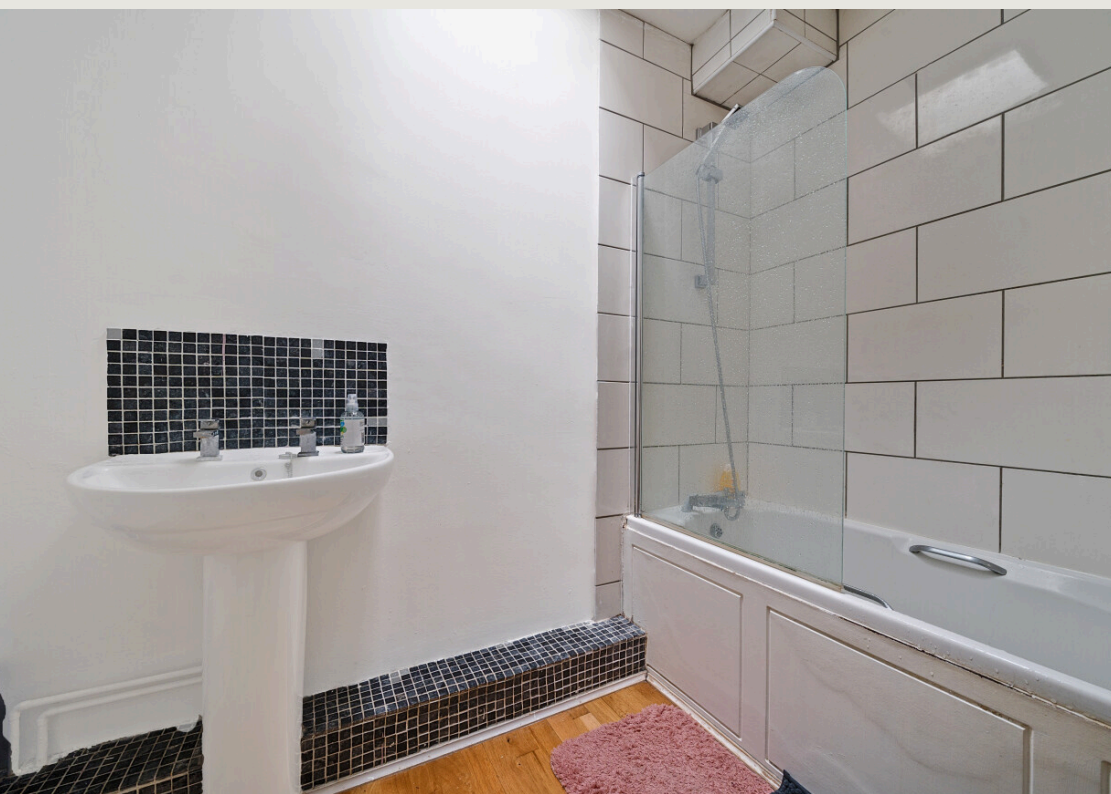


Upstairs, the property offers three bedrooms, including a spacious master bedroom with a beautiful bay window, a separate office space perfect for home working, and a well-sized family bathroom.

Outside, the property boasts a substantial rear garden in excess of 70 feet—ideal for outdoor entertaining or future landscaping projects. There is also off-street driveway parking to the front of the home.

Substantial
Garden



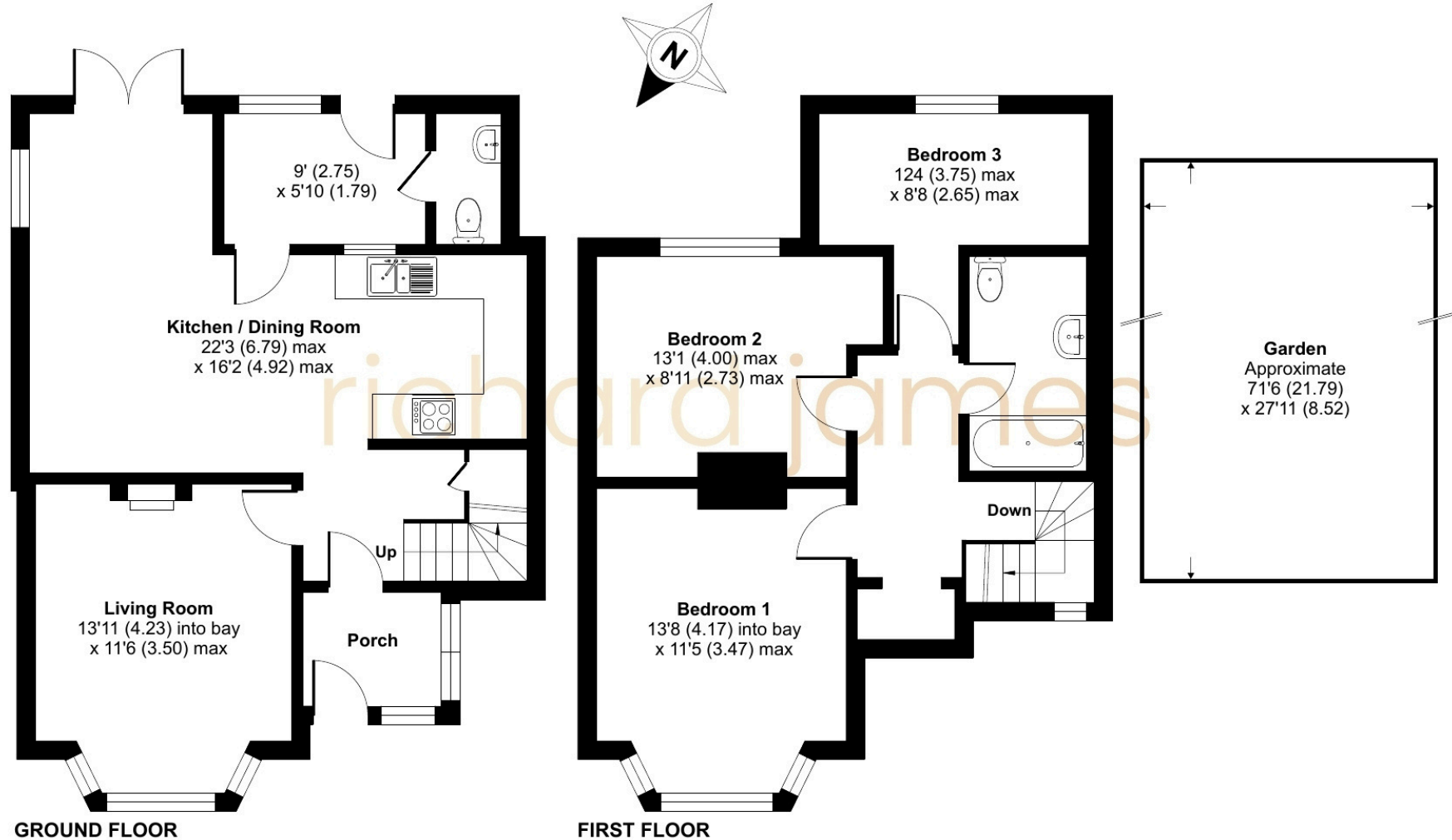


Perfectly located within walking distance to Old Town's popular amenities including Wood Street's cafes, restaurants and shops, the property also offers excellent access to major transport links such as the A419, M4, and Swindon Train Station. It is within easy reach of Nationwide HQ and is very close to the Great Western Hospital.

This is a rare opportunity to own a superb home in a prime location, with endless potential to make it your own.

Approximate Area = 1092 sq ft / 101.4 sq m

For identification only - Not to scale



01793 520 720

oldtown@richardjames.uk

101 Victoria Road | Old Town | Swindon | SN1 3BD

richardjames.uk

   @rjestateagent