



9 The Elms, Highworth, SN6 7DD

**£275,000**

**richard james**

Village & Country Homes



## The Elms

Highworth

Freehold | EPC Rating - TBC



A beautifully presented, spacious two double bedroom semi-detached home, freshly redecorated and newly carpeted throughout.

This charming property offers well-proportioned accommodation including a welcoming lounge, kitchen, useful cellar, two generously sized double bedrooms, and a family bathroom.

Externally, the property boasts a low-maintenance courtyard—perfect for al fresco dining or relaxing outdoors.

Offered to the market with no onward chain, this superb home is ideal for first-time buyers, investors, or those looking to move swiftly. Early viewing is highly recommended.



Located on the edge of the Cotswolds, the historic market town of Highworth offers the perfect blend of character, convenience, and community.

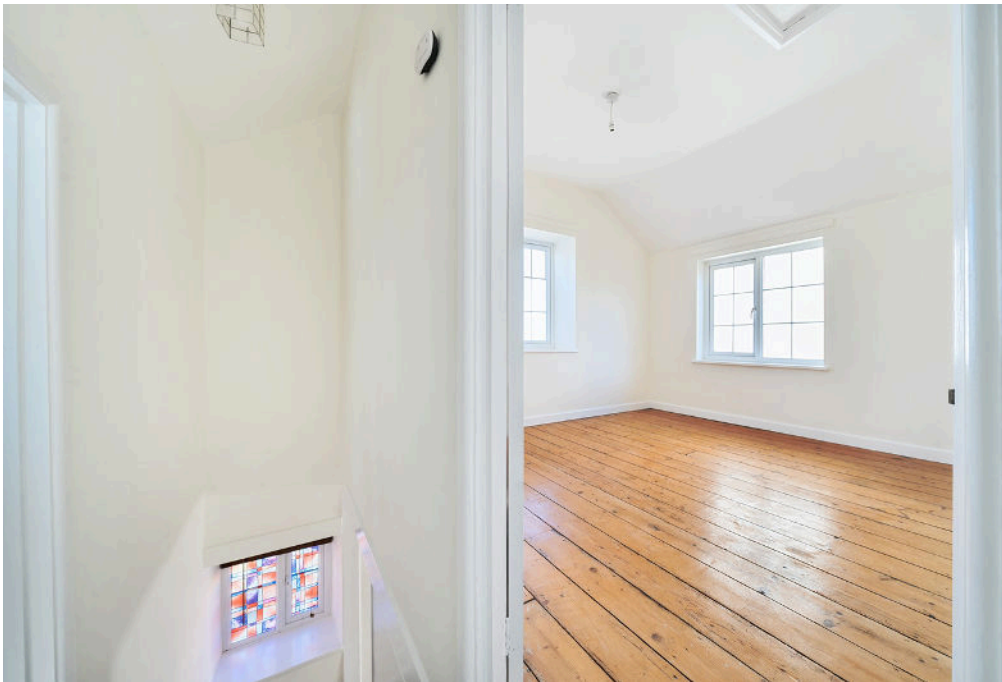
Steeped in heritage, Highworth boasts a charming High Street lined with period architecture, independent shops, cosy cafés, and a weekly market that brings a real sense of vibrancy to the town. Residents enjoy excellent local amenities including a selection of pubs, a post office, supermarkets, and highly regarded schools, making it a popular choice for families and professionals alike.

For those seeking outdoor pursuits, the nearby countryside offers an abundance of scenic walks, cycling routes, and nature reserves. Highworth is also well-connected, with Swindon just a short drive away, providing direct rail links to London Paddington, as well as easy access to the A419 and M4 corridor.



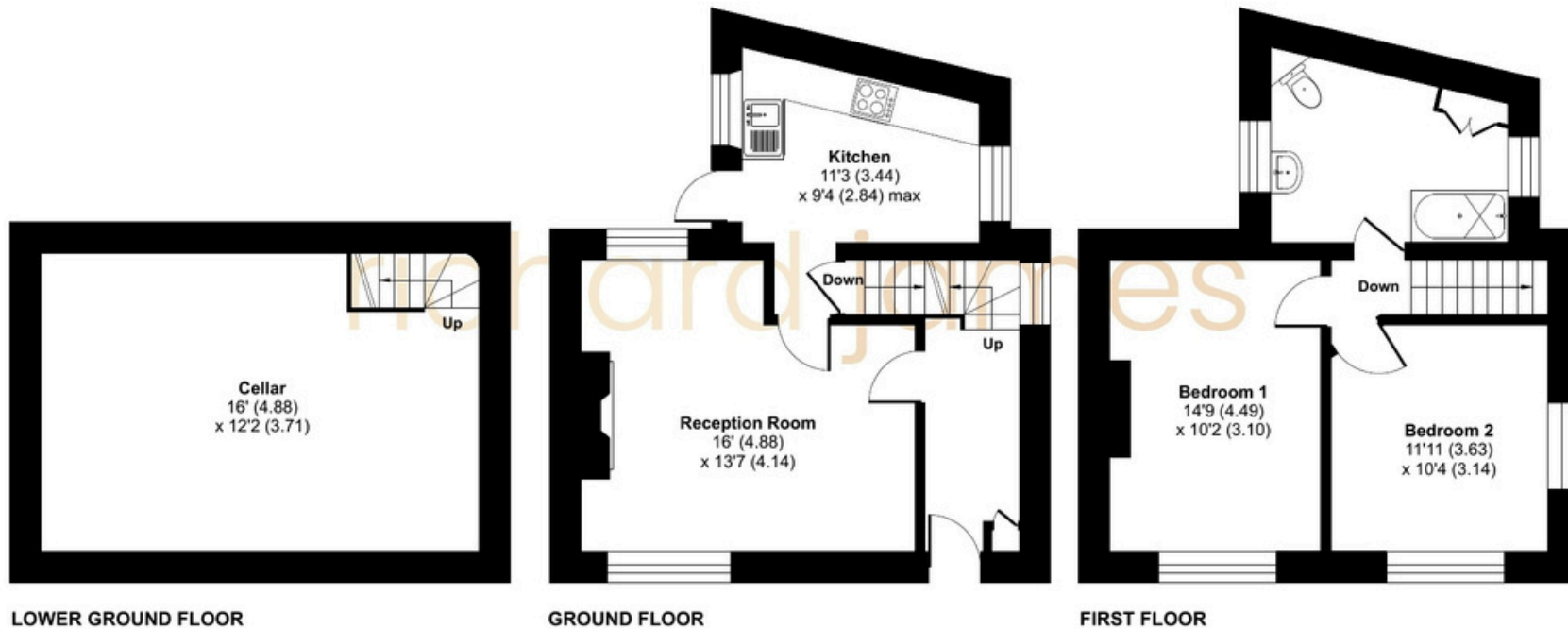








# Floorplan



01793 765 292

highworth@richardjames.uk

36 High Street | Highworth | SN6 7AQ

richard james

richardjames.uk