



Highridge Cottage, Red Barn, Wroughton, Swindon, SN4 9LT

Guide Price £550,000

richard james



Highridge Cottage

Wroughton

Freehold | EPC Rating - E



Highridge Cottage is a three-bedroom property, set on a generous 0.43-acre plot, it provides a fantastic renovation opportunity with loads of potential.

Situated on the edge of Wroughton in a semi-rural position, it offers the best of both worlds—peaceful countryside surroundings while maintaining easy access to Wroughton village, Marlborough and the larger town of Swindon (With mainline train to London Paddington in c.1hr)

The home itself provides great scope to extend and improve, allowing you to tailor it to your needs.

Additionally, a large shed/barn on the property presents further potential—whether for a granny annex, workshop, or additional living space (subject to planning permissions).



Offered for sale with no onward chain, this unique and individual property is a must-see for anyone looking to create their dream home in a desirable location.

Internal viewing is highly recommended!







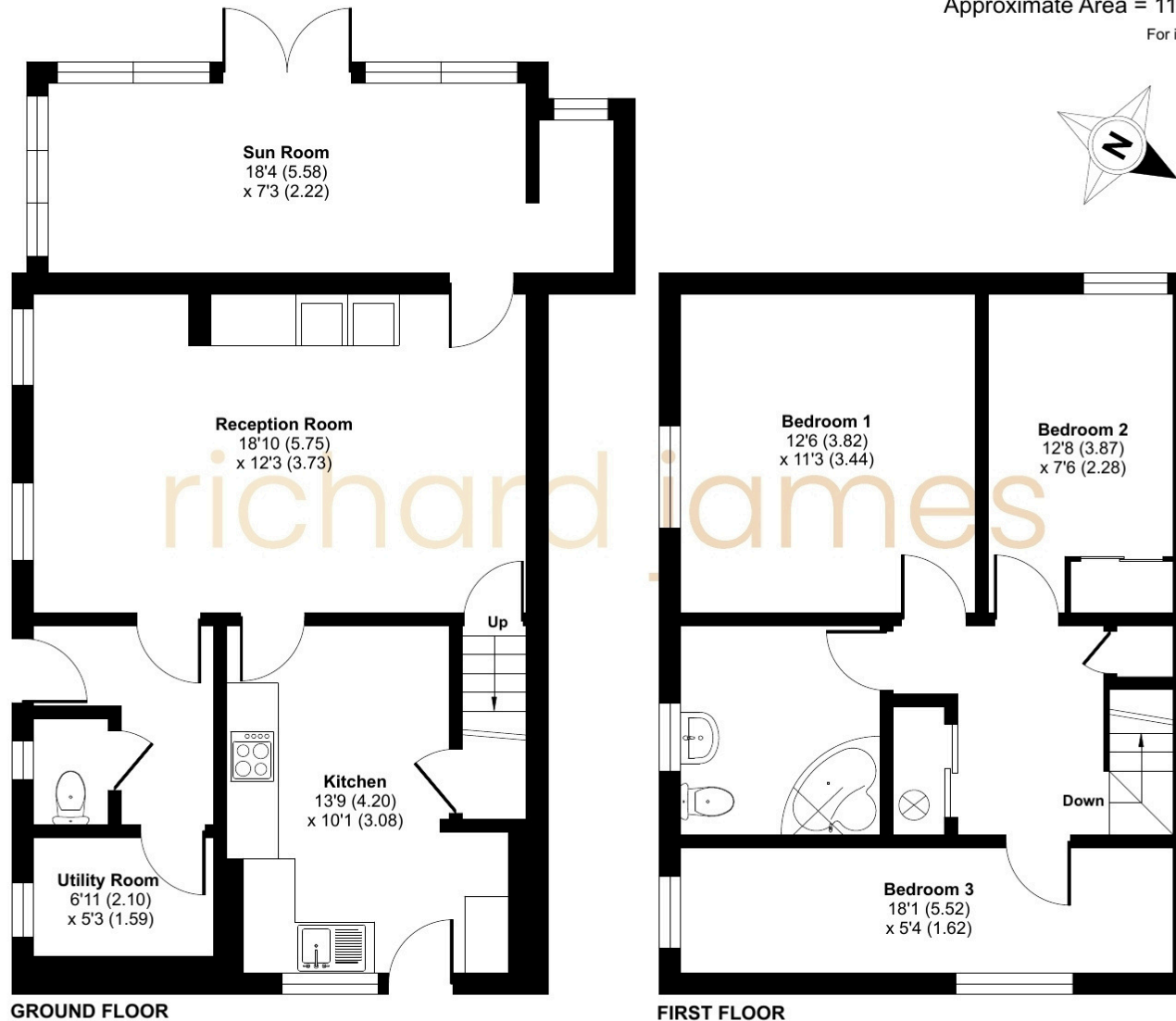




Floorplan

Approximate Area = 1148 sq ft / 106.6 sq m

For identification only - Not to scale



01793 520 720

oldtown@richardjames.uk

101 Victoria Road | Swindon | SN1 3BD

richard james

richardjames.uk