



79 Stubsmead, Eldene, Swindon, SN3 3TB

Offers in excess of £240,000

richard james



## Stubsmead

Eldene

Freehold | EPC Rating - C

 3  2  2

Located in the popular area of Eldene, this well-presented three-bedroom home is ready to move into and perfect for first-time buyers, families, or investors.

The property offers a spacious and bright kitchen/dining area at the rear, providing the perfect space for hosting friends/family and cooking your favourite dishes in the recently modernised kitchen.

The lounge is positioned at the front of the home, offering a practical layout with ample space for sofas. You will also locate as useful study/office space on the ground floor, perfect for those working from home.

The conservatory is located off the kitchen and there is also a w/c on the ground floor.

Upstairs, there are three well-sized bedrooms along with the beautifully presented bathroom which was remodelled very recently.

Externally, the property benefits from free parking for residents and visitors



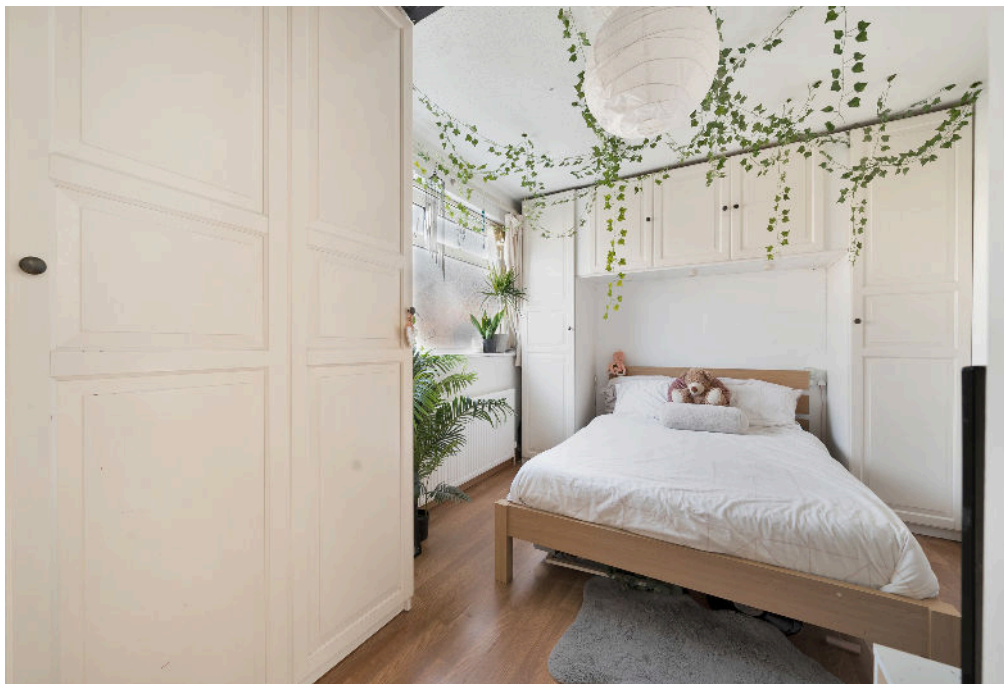
. The location is highly convenient, with easy access to local amenities, including Morrisons supermarket, a gym, and excellent transport links for commuters.

Please get in touch to arrange your viewings.







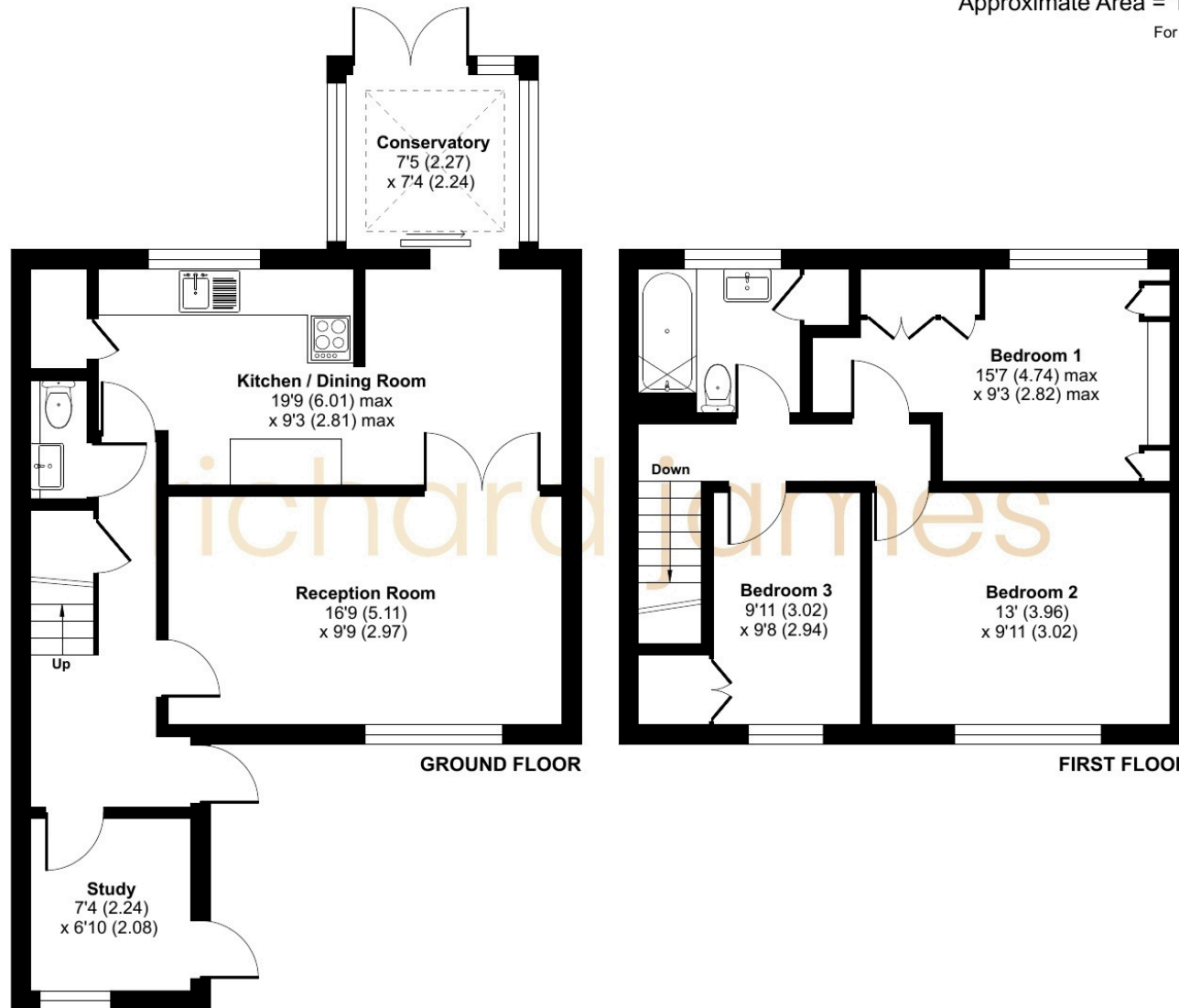




# Floorplan

Approximate Area = 1018 sq ft / 94.5 sq m

For identification only - Not to scale



01793 311 049

[jordancobb@richardjames.uk](mailto:jordancobb@richardjames.uk)

101 Victoria Road | Swindon | SN1 3BD

**richard james**

[richardjames.uk](http://richardjames.uk)