



50 Hathaway Road, Upper Stratton, Swindon, SN2 7TP

Guide Price £270,000

richard james



Hathaway Road

Upper Stratton

Freehold | EPC Rating - TBC



Located on the popular Hathaway Road, this well-presented three-bedroom semi-detached home offers spacious and comfortable living in the heart of Upper Stratton.

Upon entering, you are welcomed by an entrance porch leading into a generous lounge, perfect for relaxing or entertaining guests.

To the rear, the kitchen-diner provides a fantastic open space for family meals, with views over the garden.

Upstairs, there are three bedrooms, including two spacious doubles and a versatile single, ideal as a child's room, study, or dressing area. A family bathroom completes the upper level.

The private rear garden is a great outdoor space, featuring two handy storage sheds and a garage with additional parking at the rear.



Situated close to local schools, shops, and excellent transport links, this property is ideal for families, first-time buyers, or those looking to upsize.





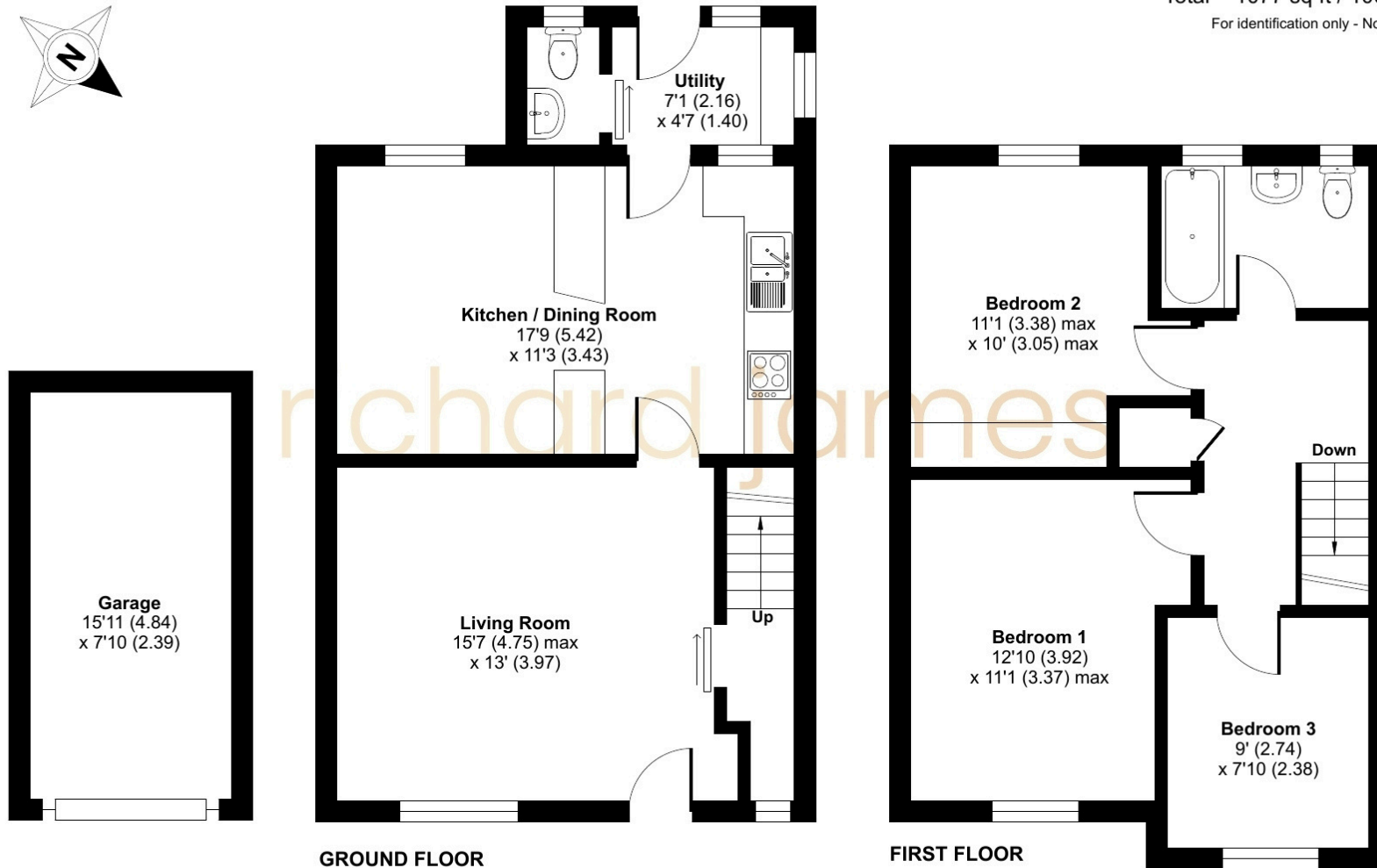




Floorplan

Approximate Area = 952 sq ft / 88.4 sq m
Garage = 125 sq ft / 11.6 sq m
Total = 1077 sq ft / 100 sq m

For identification only - Not to scale



07460 922 221

izzybowles@richardjames.uk

101 Victoria Road | Swindon | SN1 3BD

richard james

richardjames.uk