

Mackay Crescent,
Tadpole Garden Village, SN25
2BA



rent

£1,600 per
month
richard
james

[incentivised.com](https://www.incentivised.com)



 4  0  2

* energy efficiency
rating

| B

This modern and spacious FOUR bedroom detached home is located in the sought after area of Tadpole Garden Village and would be perfect for a family due to its generous size. The ground floor accommodation comprises; Entrance hall, modern kitchen with full white goods and breakfast area, cloakroom and a spacious lounge/diner with double doors leading out to a fully enclosed rear garden with side access. To the first floor there is double master bedroom with en-suite shower room, two further double bedrooms, single bedroom and a family bathroom with shower over bath. Externally the property also benefits from a Garage and driveway parking for two cars. Offered unfurnished and available 28th April.

We are unable to proceed with a tenancy until we have verified your Photo ID (Passport) and Proof of Address dated in the last 3 months. Please bring both documents to the viewing.



exceptional service

Our team will guide you through the process of buying or selling your home.

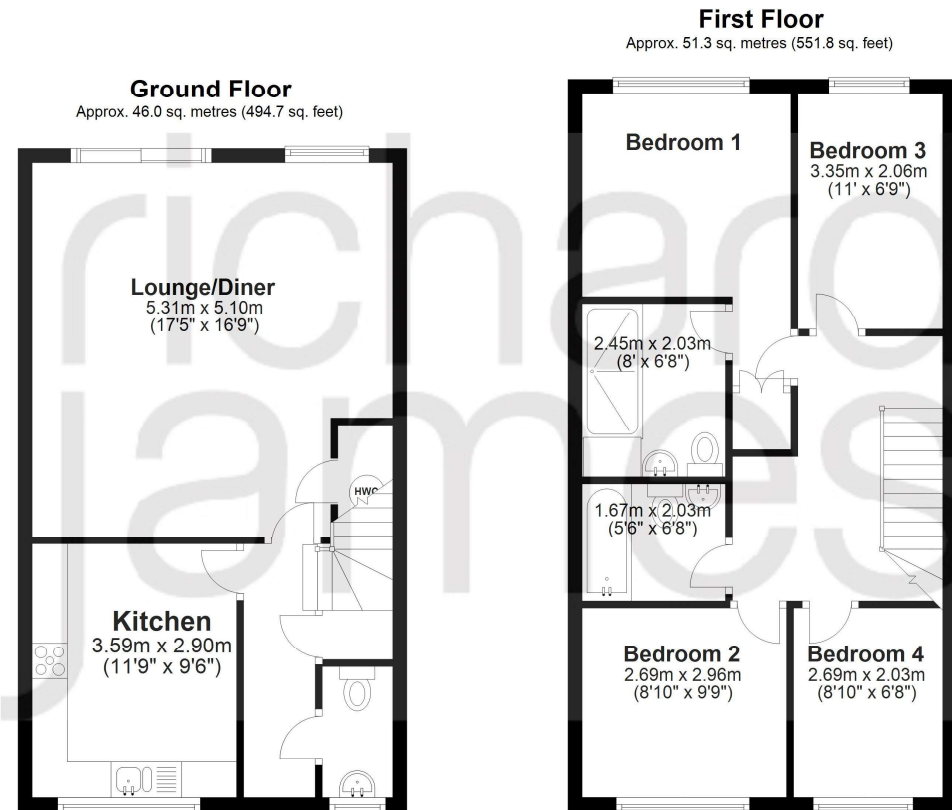
We have a team of dedicated sales progressors in place to ensure your purchase or sale runs smoothly through to completion, keeping you in the loop and a close eye on your chain while moving you in as swiftly and smoothly as possible.

- Honest valuations in current market conditions
- Dedicated sales progression team
- Recommended financial advisors
- 5* service from valuation to completion
- Award winning lettings service
- Ahead of the game marketing strategies
- Professional photography
- Social media marketing
- Top listings on Rightmove and Zoopla

call us for a free
valuation on your
property

lettings@richardjames.info

Gemini House | Hargreaves Road | SN25 5AZ



Total area: approx. 97.2 sq. metres (1046.5 sq. feet)

Richard James & their clients give notice that:

1. These sales and particulars do not constitute any part of an offer of contract, and are for the guidance of prospective purchasers only and should not be relied on as statements of fact.
2. No representations are made in these particulars as to the condition of the property or as to whether any service or facilities are in good working order.
3. All Measurements are approximate.

Zoopla

PrimeLocation

rightmove