



82 Wharf Road, Wroughton, Swindon, SN4 9LJ

Guide Price £325,000

richard james



Wharf Road

Wroughton

Freehold | EPC Rating - D

 3
  1
  2

This well-presented three-bedroom detached bungalow is located in the desirable village of Wroughton. The property boasts a spacious open-plan living and dining area, a refitted kitchen, and a modern shower room.

Each of the three bedrooms offers comfortable living space, making it an ideal home for families or downsizers alike.

Externally, the bungalow benefits from a double driveway, providing ample off-road parking. The enclosed rear garden offers privacy and a peaceful outdoor space to enjoy.

Conveniently situated within walking distance of Wroughton's village centre, the property is close to local amenities, including shops, bus stops, and the local surgery.

Wroughton also provides excellent access to Wichelstowe, where residents can find a Waitrose, Hall and woodhouse brasserie and additional village amenities. The nearby market towns of Royal Wootton Bassett and Swindon's Old Town offer further shopping, dining, and leisure options.

Transport links are excellent, with easy access to the M4 and A419, as well as Swindon's mainline railway station, which offers direct services to London in under an hour.

Offered with no onward chain, the property will be available for completion around September.





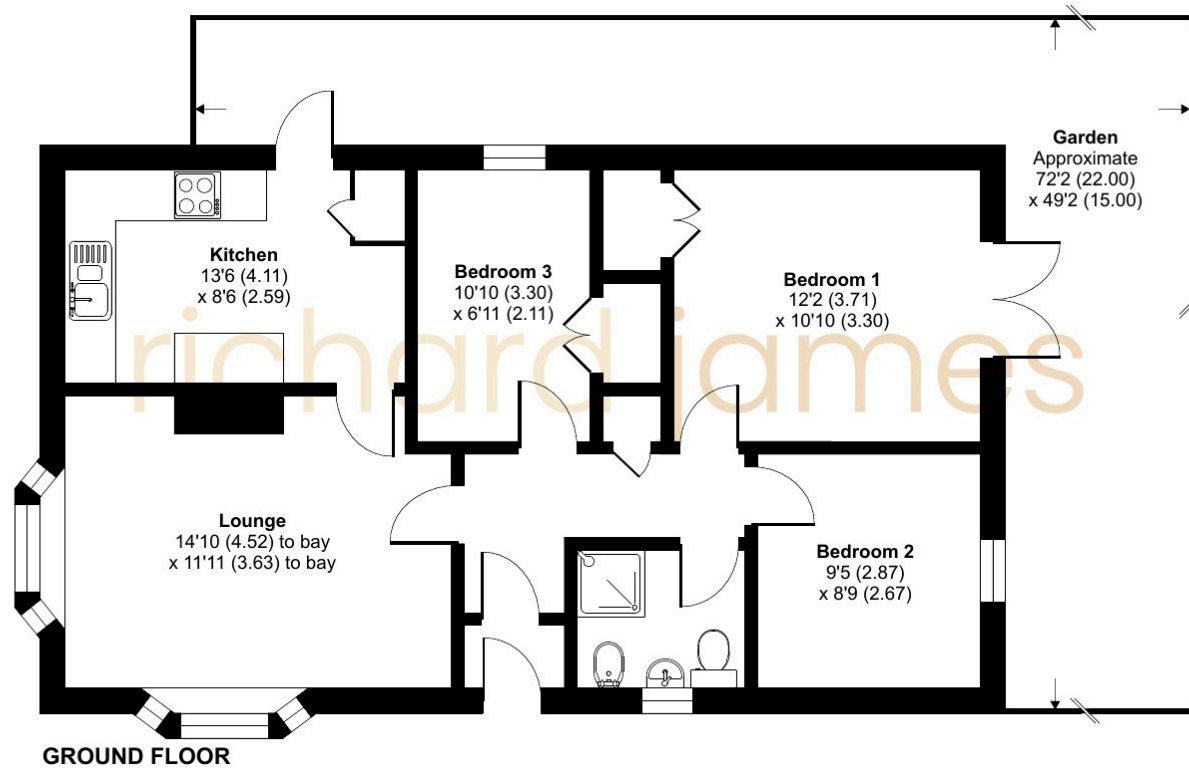




Floorplan

Approximate Area = 761 sq ft / 70.7 sq m

For identification only - Not to scale



01793 814 542

wroughton@richardjames.uk

101 Victoria Road | Swindon | SN1 3BD

richard james

richardjames.uk