



4 Crofton Road, Badbury Park, Swindon, SN3 6FF

**Guide Price £450,000- £475,000**

**richard james**





## Crofton Road

### Badbury Park

Freehold | EPC Rating - B



**\*\*GUIDE PRICE £450,000 - £475,000\*\***

Situated on a quiet street in the highly desirable Badbury Park area, this beautifully presented four-bedroom detached home offers modern and spacious living, perfect for families or professionals alike.

As you enter there is a front hall, leading to a generously sized lounge, ideal for relaxing and entertaining. The heart of the home is the stylish kitchen/diner, featuring French doors opening onto the garden, seamlessly blending indoor and outdoor living. A utility room, convenient WC, and integral garage complete the ground floor.

Upstairs, you'll find four well-proportioned bedrooms, including a master suite with an en-suite shower room. The remaining bedrooms share a contemporary family bathroom, catering to the needs of a growing family.

Externally, the low-maintenance rear garden is mostly laid with astro turf, featuring a putting green at the back—perfect for golf enthusiasts! A patio area provides a great space for outdoor dining.

To the front, a driveway offers side-by-side parking for two cars.



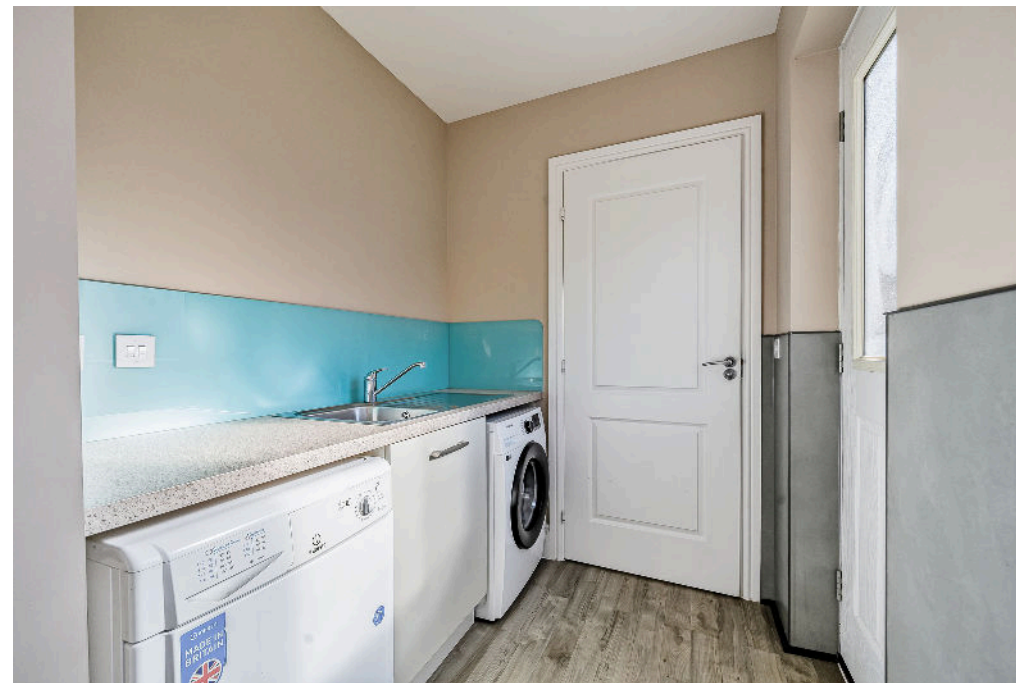


Badbury Park is a popular development, conveniently located near schools, amenities, and excellent transport links, including the A419 and M4 for commuters.

This stunning home won't be on the market for long—early viewing is highly recommended!



















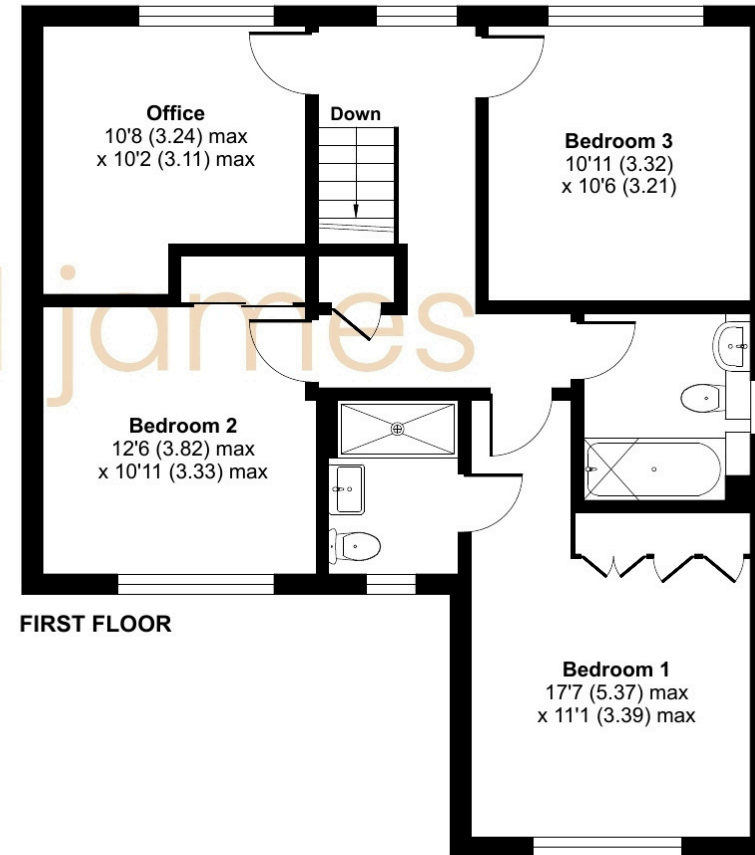
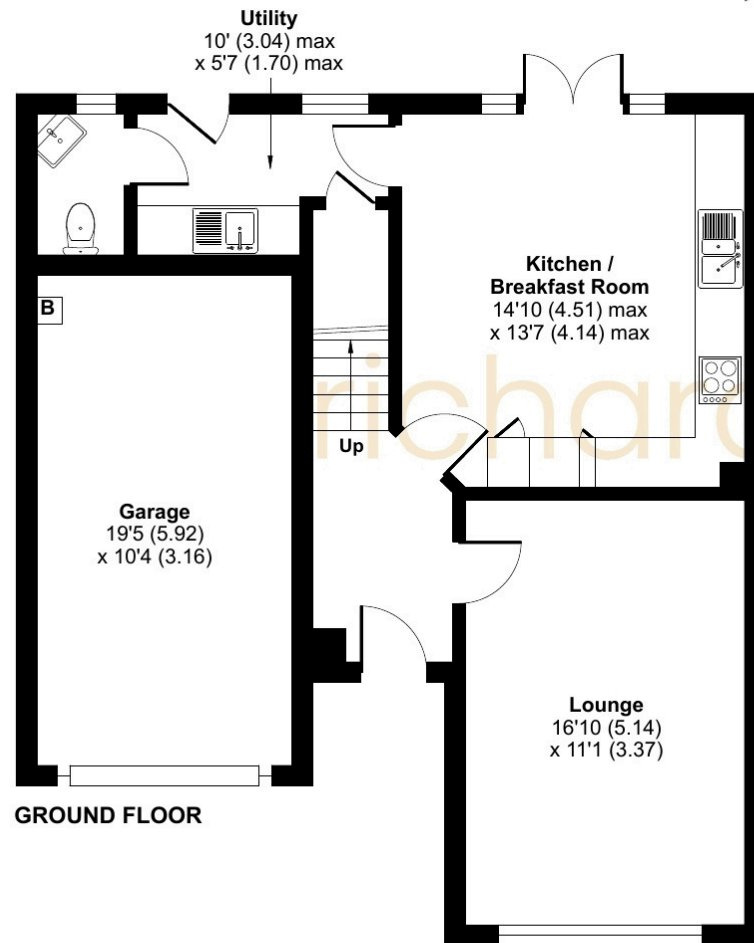


# Floorplan



Total = 1473 sq ft / 136.8 sq m

For identification only - Not to scale



07460 922 221

izzybowles@richardjames.uk

101 Victoria Road | Swindon | SN1 3BD

richard james

richardjames.uk