



15 Manor Crescent, Moredon, Swindon, SN2 2LG

**Guide Price £230,000-£240,000**

**richard james**



## Manor Crescent

Moredon

Freehold | EPC Rating - B



This well-proportioned three-bedroom end-of-terrace home in Morden, Swindon, offers plenty of space both inside and out, making it a great choice for families, first-time buyers, or investors.

The ground floor features a good-sized living room at the front, leading through to a large kitchen-diner at the rear.

With ample space for cooking, dining, and socialising, this room is the heart of the home and provides direct access to the landscaped rear garden, a lovely space to enjoy in the warmer months.

Upstairs, there are three well-sized bedrooms, offering flexibility for family life, guests, or a home office. The modern shower room is bright and practical, completing the first floor.

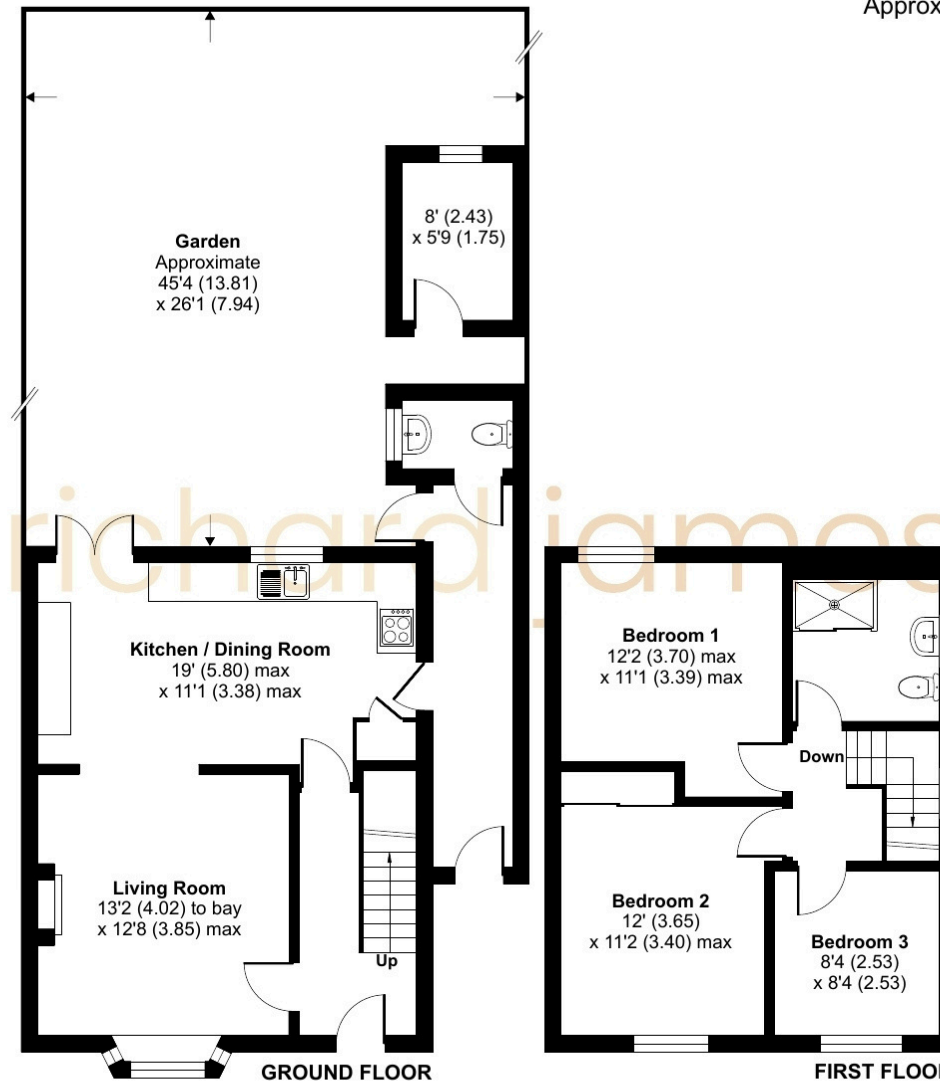
Externally, the property benefits from driveway parking and a brick-built storage shed, providing useful additional space.

Situated close to local amenities, schools, and transport links, this home offers excellent potential. Contact us today to arrange a viewing!





# Floorplan



Approximate Area = 1027 sq ft / 95.4 sq m  
Outbuilding = 44 sq ft / 4 sq m  
Total = 1071 sq ft / 99.4 sq m  
For identification only - Not to scale

07460 922 221

izzybowles@richardjames.uk

101 Victoria Road | Swindon | SN1 3BD

richard james

richardjames.uk