



12 Willington Road, Redhouse, Swindon, SN25 2HB

Guide Price £280,000-£300,000

richard james



## Willington Road

### Redhouse

Freehold | EPC Rating - C



\*\*GUIDE PRICE £280,000 - £300,000\*\*

Situated in the desirable Redhouse area of North Swindon, this well-presented three-bedroom terraced townhouse offers generous living space across three floors. Ideally located near the local village centre and the highly regarded Abbey Park School, this home is perfect for families.

On the ground floor, you'll find a modern kitchen-breakfast room positioned at the rear, providing a bright and sociable space for dining. There's also a convenient downstairs WC and an integral garage for secure parking and additional storage.

The first floor boasts a spacious lounge, ideal for relaxing or entertaining, along with the third bedroom, which is a double but could also serve as a home office or guest room.

Upstairs, the top floor features two well-proportioned double bedrooms, including a master suite complete with its own en-suite shower room. A family bathroom serves the second bedroom, offering practicality and comfort.



Externally, the rear garden is larger than average for a town house and mostly laid to lawn. There is also a driveway to the front for parking.







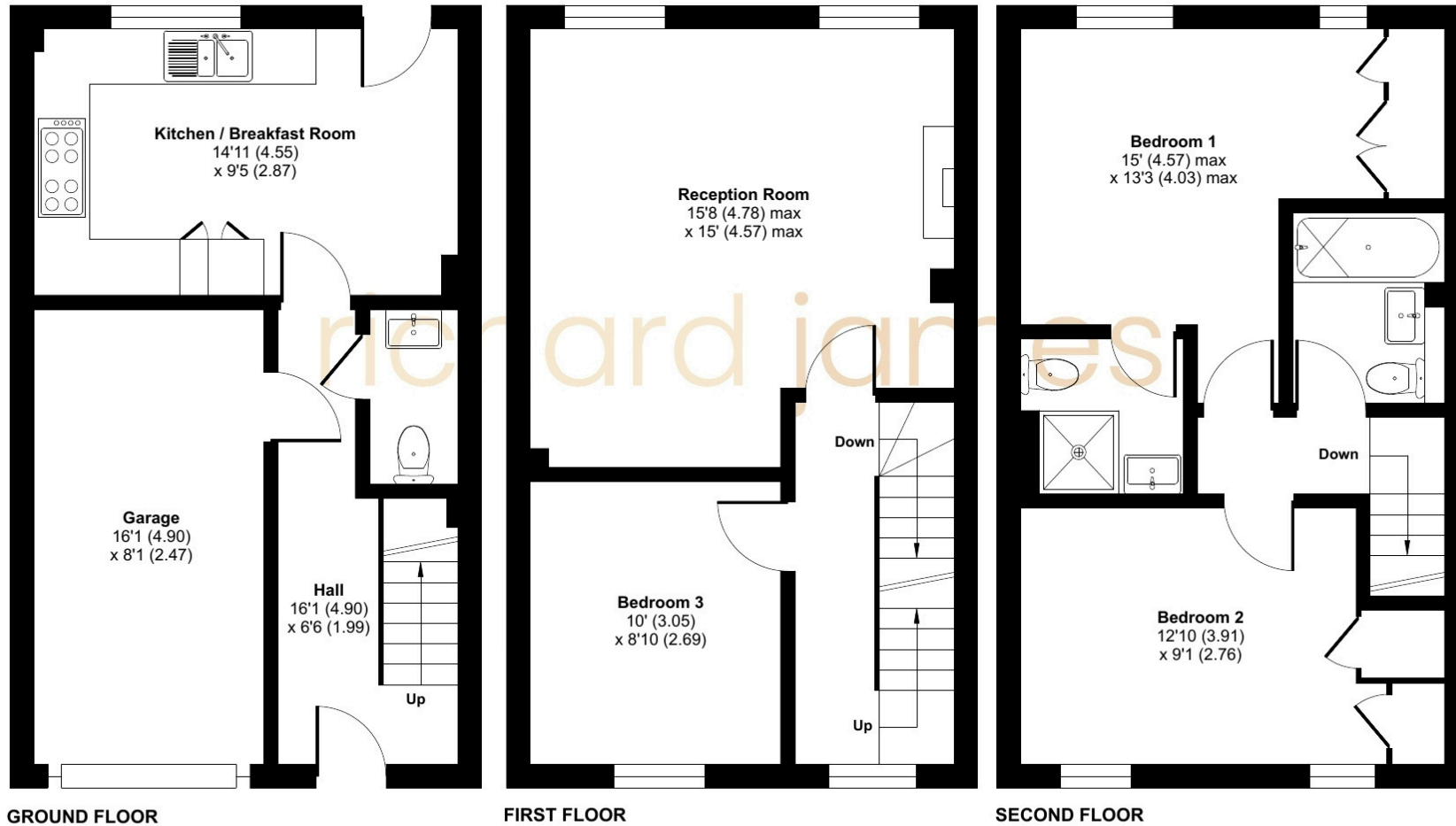




# Floorplan

Approximate Area = 1021 sq ft / 94.8 sq m  
Garage = 130 sq ft / 12 sq m  
Total = 1151 sq ft / 106.9 sq m

For identification only - Not to scale



07460 922 221

izzybowles@richardjames.uk

101 Victoria Road | Swindon | SN1 3BD

richard james

richardjames.uk