



3 Gilling Way, Covingham, Swindon, SN3 5EQ

**Offers Over £325,000**

**richard james**



## Gilling Way

### Covingham

Freehold | EPC Rating - D



- MODERN KITCHEN/DINER - LARGE DRIVEWAY - DOWNSTAIRS W/C -  
POTENTIAL TO EXTEND (STPP) - LANDSCAPED GARDEN

Richard James are delighted to welcome to market this fantastic home on generous plot within Covingham.

The home has been modernised throughout from top to bottom creating the perfect space for the new owner to move straight in and enjoy everything on offer.

Upon entry you are greeted by an entrance porch leading on to the hall which provides access to the downstairs wc, modern fitted kitchen/diner and the lounge.

The Kitchen/Diner is the real hub of the home, a fantastic space to host friends and family with the breakfast bar, dining space and patio doors leading to the garden.

Upstairs offers three generous sized bedrooms and a the family bathroom which has been modernised by the current owners.

Externally you will find a landscaped rear garden with a combination of indian sandstone patio, decking and lawn area teamed with an outbuilding with power.



Other benefits include a large secure store area to the side, ample driveway parking and access to local schools, amenities and to the A419.

We highly recommend a viewing.

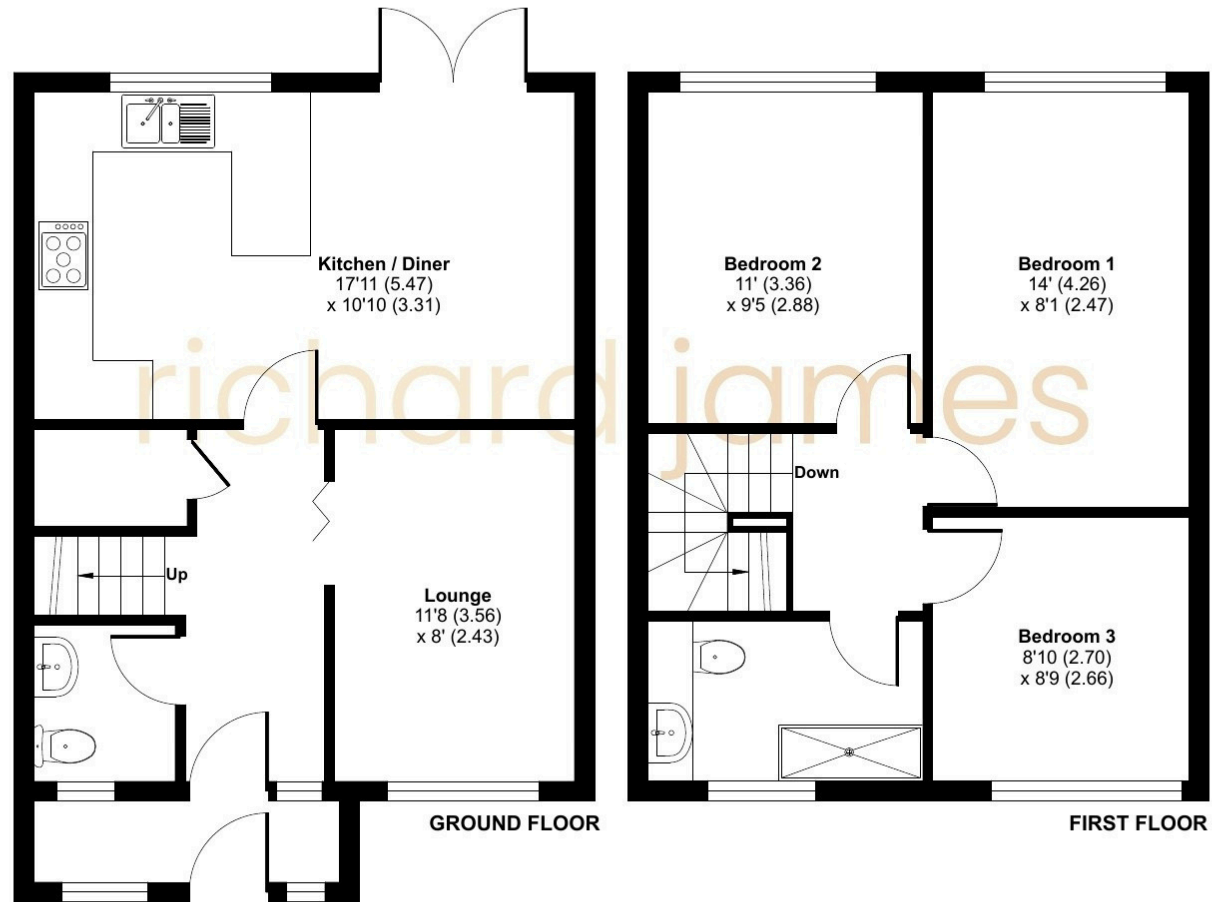








# Floorplan



01793 311 049

[jordancobb@richardjames.uk](mailto:jordancobb@richardjames.uk)

101 Victoria Road | Swindon | SN1 3BD

**richard james**

[richardjames.uk](http://richardjames.uk)