



25 Blanchard Road, Tadpole Garden Village, Swindon, SN25 2UW

Guide Price £375,000-£385,000

richard james



Blanchard Road

Tadpole Garden Village

Freehold | EPC Rating - B



- OPEN PLAN LIVING - BI FOLD DOORS - LARGE LANDSCAPED GARDEN -
DRIVEWAY PARKING - GARAGE - EN SUITE - POPULAR LOCATION

Richard James are delighted to welcome to the market this beautifully presented home in the hugely popular Tapdole Garden Village.

The main area provides fantastic open plan living with plenty of room for sofas, large dining table and the kitchen.

A media wall has been installed with a feature evonic fire providing a real focal point to the room. The kitchen appliances are all built in, therefore will be staying with the new owner. The flooring throughout this space is a lovely light oak effect.

Upstairs you will find three bedrooms, two of which are fantastic sized doubles and the third bedroom significantly bigger than your typical third room. All rooms provide built in wardrobes.

The master bedroom provides a floor to ceiling window which allows a significant amount of light to flood through, you will also find the well presented en-suite. This floor is also home to the main bathroom which is fully tiled with a new vanity unit.

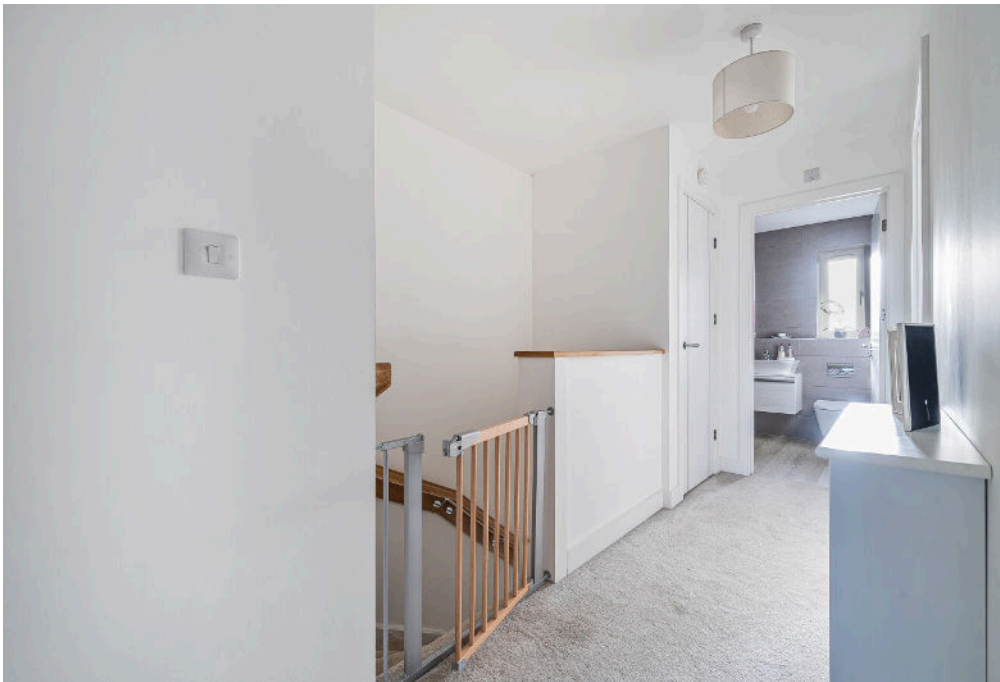
The landing is of brilliant size with ample storage. There is also scope to create another room in the loft due to its size (STPP).



Externally there is driveway parking for 3 cars in front of the garage. The rear garden has been landscaped with a combination of porcelain paving and lawn. Borders have been added to home trees which help provide privacy to the home. The garage has been partially converted to create the perfect office space with its own separate door.

Please get in touch to arrange your viewings.



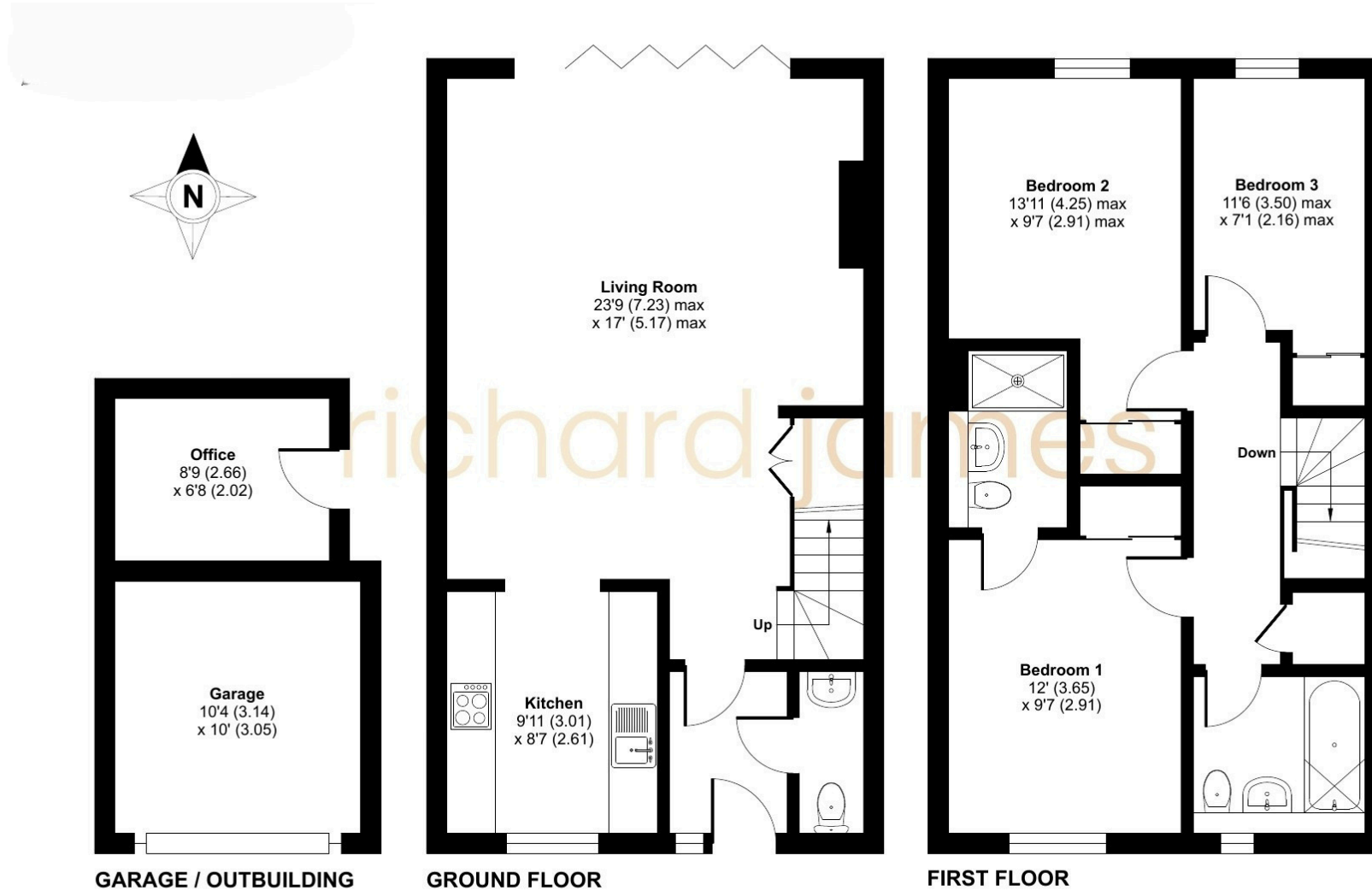








Floorplan



01793 311 049

jordancobb@richardjames.uk

101 Victoria Road | Swindon | SN1 3BD

richard james

richardjames.uk