



69 Blake Crescent, Stratton St Margaret, Swindon, SN3 4LR

**Asking Price £280,000**

richard james



## Blake Crescent

Stratton St Margaret

Freehold | EPC Rating - C



- NO CHAIN - 2 BEDROOMS - SEMI DETACHED - DRIVEWAY PARKING - GARAGE - CONSERVATORY- MODERN SHOWER ROOM - BAY WINDOWS -

Situated in the popular Stratton location, we welcome this 2-bed semi-detached bungalow. This property holds heaps of curb appeal & the home is being sold FREE OF CHAIN.

As you enter the property you are welcomed into the entrance hall. To the left, is a good-sized double bedroom with built-in storage, the room is neutrally decorated and is of a great size.

Bedroom number two is situated just down the corridor, another great size room with ample space for a double bed and other furnishings.

The living room is also of a great size, with bay fronted windows and a feature gas fireplace. There is a large window allowing light to flow through the home.

The kitchen is situated at the back of the home, with lots of surface space and ample room to fit in the dining table, you access to the large conservatory from here also.

The family bathroom has been recently changed into a shower room, with a large modern shower and modern wall tiles providing a fantastic finish.



Externally, you have a large driveway, providing parking to comfortably fit 3+ vehicles and garage.

The garden is of great size and the perfect space for those of you that are green fingered.

Please call to book your viewings.









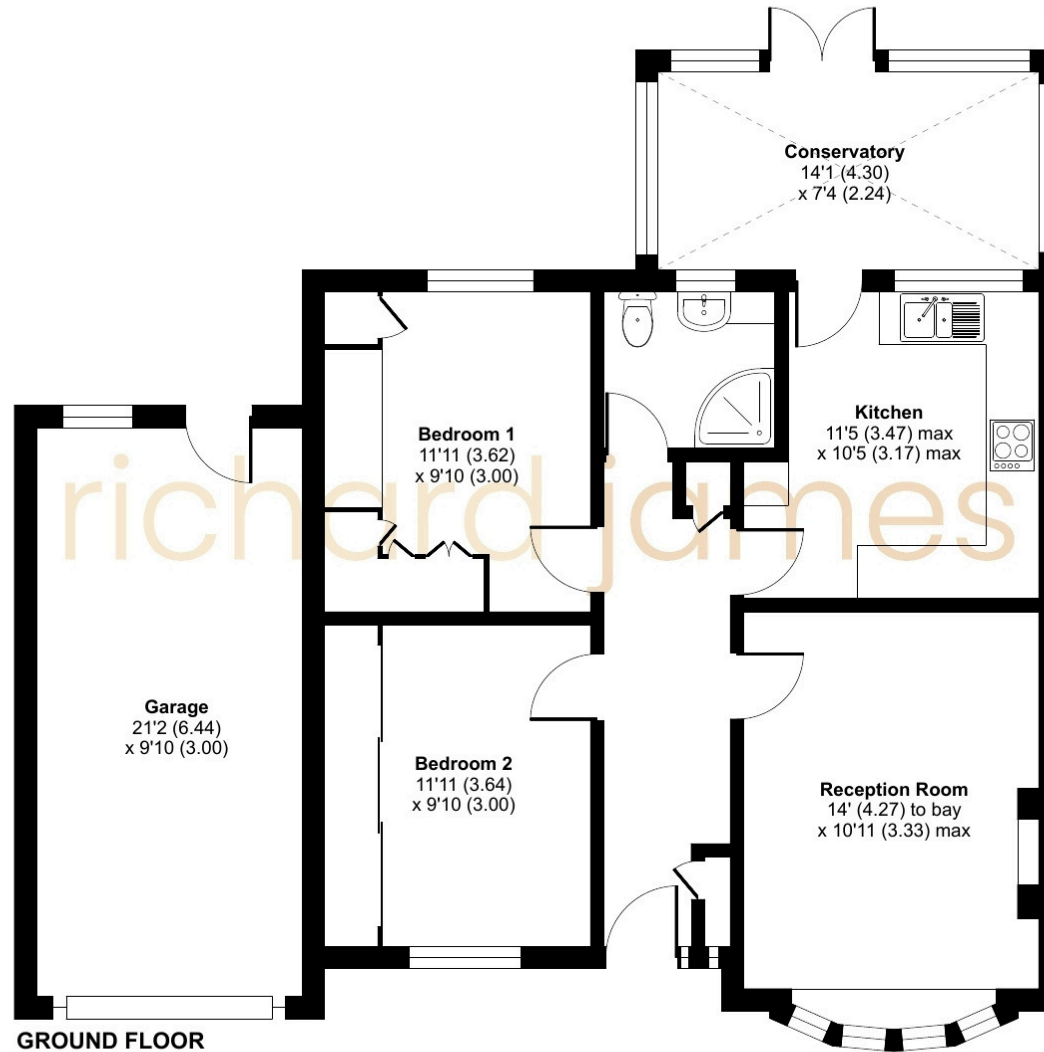
# Floorplan

Approximate Area = 784 sq ft / 72.8 sq m

Garage = 208 sq ft / 19.3 sq m

Total = 992 sq ft / 92.1 sq m

For identification only - Not to scale



GROUND FLOOR

01793 311 048

[jordancobb@richardjames.uk](mailto:jordancobb@richardjames.uk)

101 Victoria Road | Swindon | SN1 3BD

richard james

[richardjames.uk](http://richardjames.uk)