



8 Orange Close, Highworth, SN6 7BD

Asking Price: £350,000

richard james

Village & Country Homes



Orange Close - Highworth

FREEHOLD

Council Tax Band - B | EPC Rating - TBC



This beautifully presented four-bedroom semi-detached property, situated in the heart of the desirable market town of Highworth, seamlessly combines modern design with family-friendly functionality. With its versatile layout, spacious interiors, and an array of contemporary features, this home is ready for you to move in and enjoy.

The ground floor boasts a bright and spacious kitchen/dining room, extending across the rear of the property—a perfect space for family meals or entertaining guests—with direct access to the east-facing rear garden. The living room offers a warm and inviting atmosphere, ideal for relaxing or hosting. Additionally, the ground floor features a versatile double bedroom, suitable as a guest suite, home office, or additional living space, a modern four-piece bathroom, and a practical utility room for added convenience.

Upstairs, you will find three well-proportioned bedrooms, including two generous doubles and a comfortable fourth bedroom, all complemented by a stylish family shower room, complete with a double shower dressed with attractive copper shower panel.

The property is enhanced by its large east-facing rear garden, featuring a storage/workshop at the far end—perfect for outdoor projects or additional storage needs. The gravel driveway at the front provides off-road parking for up to three vehicles and includes an EV charger for electric vehicles.

Additional features include, a brand-new roof ensures peace of mind for years to come and a modern Combi boiler with HIVE heating control guarantees efficient, on-demand heating and hot water.

Located in the picturesque market town of Highworth, this home offers close proximity to excellent schools, local shops, and convenient transport links, all while being surrounded by the stunning countryside that Highworth is celebrated for.





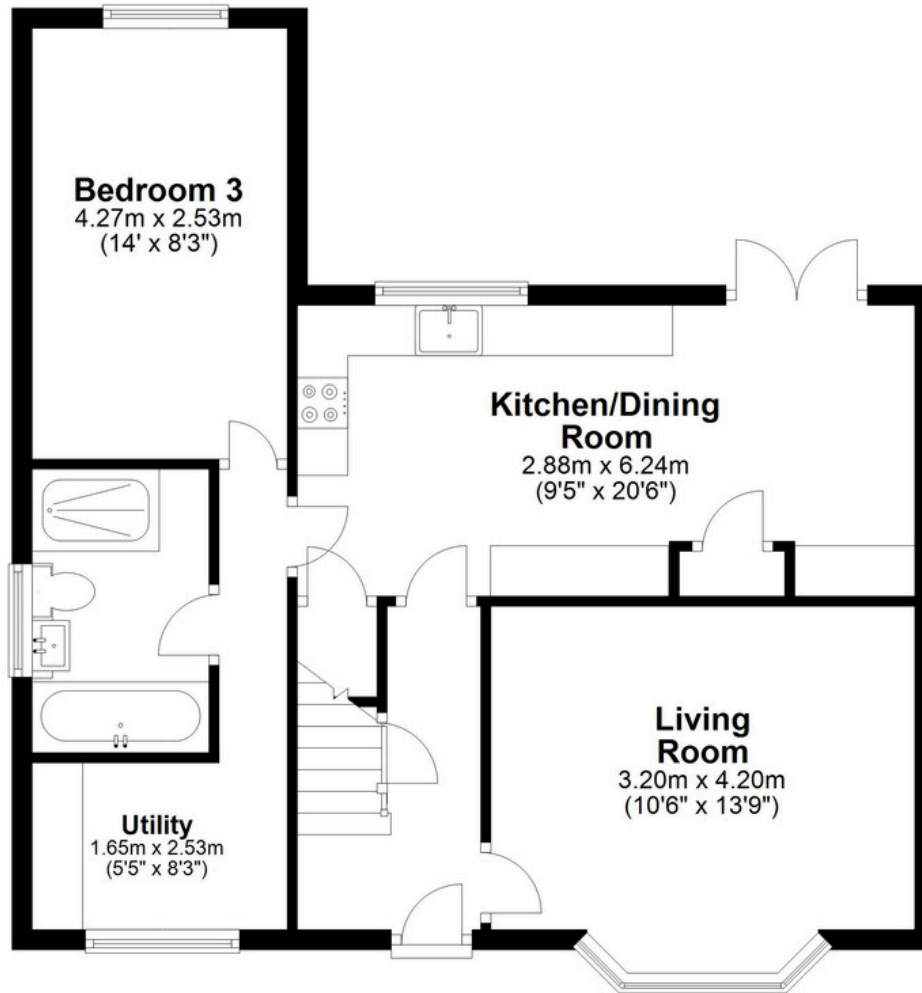




Floorplan

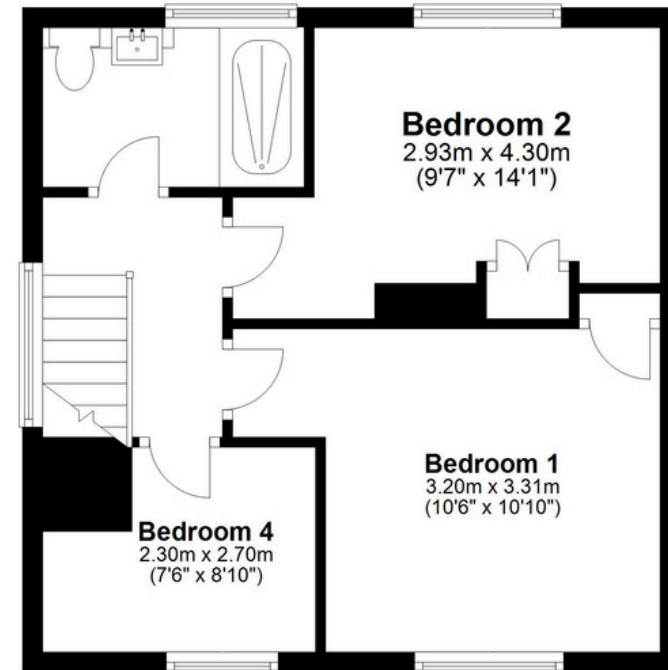
Ground Floor

Approx. 61.3 sq. metres (659.7 sq. feet)



First Floor

Approx. 37.8 sq. metres (407.0 sq. feet)



Total area: approx. 99.1 sq. metres (1066.7 sq. feet)

01793 765 292

highworth@richardjames.uk

36 High Street | Highworth | SN6 7AQ

richard james

richardjames.uk