



6 Manor Rise, Chiseldon, Swindon, SN4 0FU

**Guide Price £325,000**

**richard james**



## Manor Rise

Chiseldon

Freehold | EPC Rating - C

 3
  2
  2

Nestled in the picturesque and sought-after village of Chiseldon, this well-presented three-bedroom end-of-terrace home on Manor Rise offers the perfect blend of modern comfort and countryside charm.

Set on a quiet residential street, this bright and spacious property features a welcoming entrance hall, a generously sized living room filled with natural light, and a modern kitchen/diner with ample storage – ideal for both everyday living and entertaining.

Upstairs, you'll find three well-proportioned bedrooms, including a spacious master with en-suite, a versatile second bedroom perfect for a guest room or home office, and a third ideal for a nursery or single room. The family bathroom is finished to a high standard with contemporary fittings.

Outside, the property boasts a private rear garden, perfect for relaxing or entertaining, with side access for added convenience. Being an end-of-terrace, it also benefits from additional privacy and a larger plot. Off-street parking is available to the front of the property.

Located within easy reach of local amenities, excellent schools, and with fantastic access to the M4 and nearby Swindon, this home is ideal for families, first-time buyers or those looking to enjoy village life with modern comforts.

A wonderful opportunity to own a charming home in a thriving community – early viewing is highly recommended.





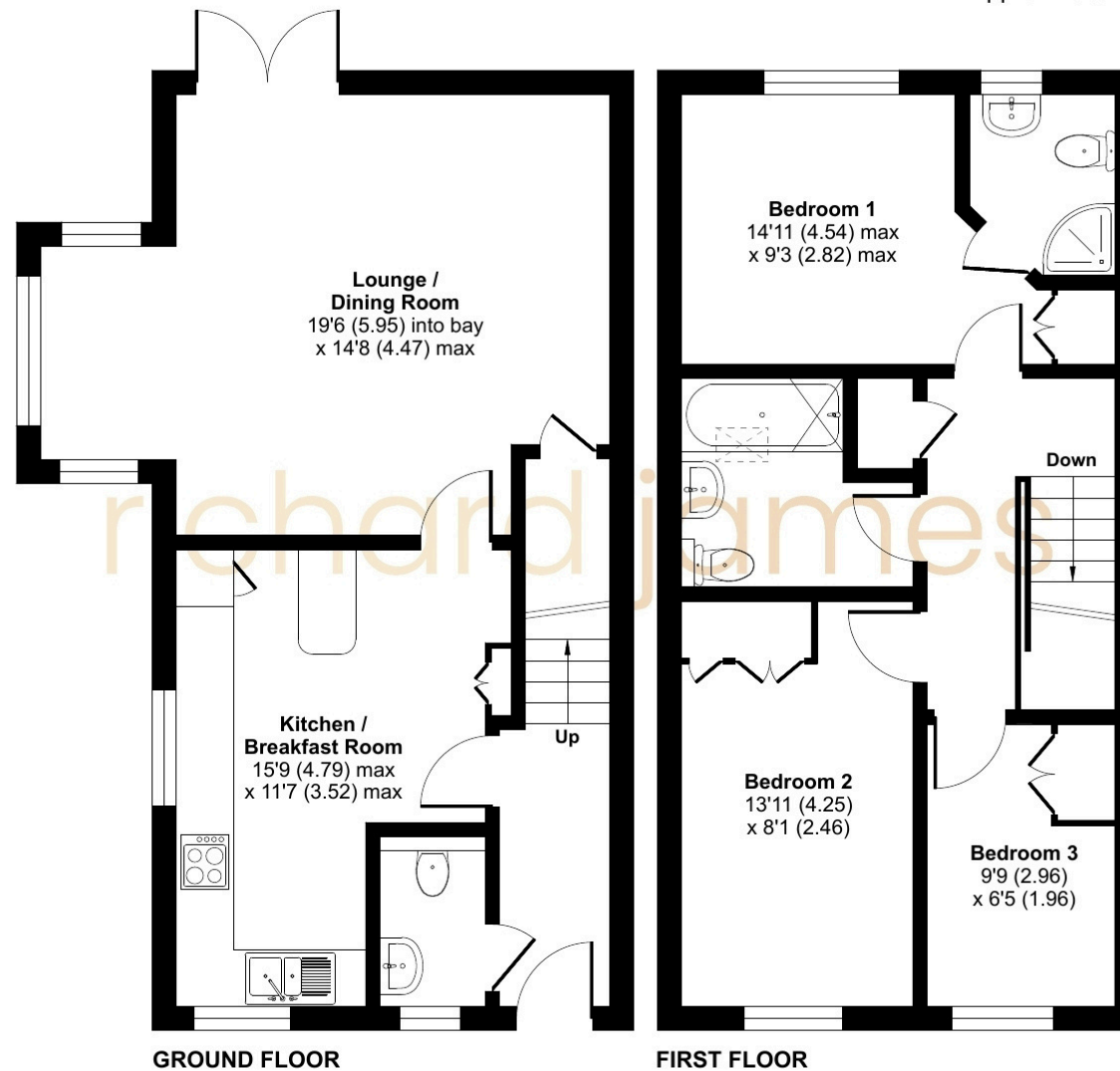




# Floorplan

Approximate Area = 966 sq ft / 89.7 sq m

For identification only - Not to scale



01793 520 720

oldtown@richardjames.uk

101 Victoria Road | Swindon | SN1 3BD

richard james

richardjames.uk