



The Bungalow, The Green, Longcot, SN7 7SY

Offers in excess of £400,000

richard james

Village & Country Homes



The Bungalow

FREEHOLD

Council Tax Band - D | EPC Rating - C



This stunning bungalow, tastefully renovated and extended by the current owner, is ideally located in the heart of Longcot, overlooking the charming village green. The property offers versatile living spaces, a bright and contemporary kitchen/diner, and a dedicated home office.

Upon entering, a porch leads to a welcoming entrance hall. The spacious sitting room flows seamlessly into the kitchen/diner, which features French doors opening to the garden. Recently extended, this area includes a ceiling light box, flooding the space with natural light. A breakfast bar separates the sitting room from the kitchen, which is equipped with an array of shaker-style cabinets, integrated appliances such as a dishwasher, larder cupboards, and a Range-style cooker. The property boasts four bedrooms, all newly carpeted, with the master bedroom offering built-in wardrobes. A modern four-piece family bathroom and an additional cloakroom complete the interior layout.

Outside, the front garden is neatly lawned and enclosed by a stone wall, with ample parking space in front of a single garage that features an inspection pit. The garden wraps around the property, with the rear section facing southwest. This private outdoor area is paved for low-maintenance enjoyment.

A separate brick-built outbuilding includes a utility room, W/C, and a home office, offering potential for conversion into an annex (subject to necessary permissions).

Longcot is a picturesque village nestled near the historic Ridgeway and the Uffington White Horse, surrounded by beautiful countryside. The village is home to a highly regarded Church of England primary school, which is well-regarded within the catchment area.

The A420 provides excellent road links to Oxford (and the M40) and Swindon (and the M4), both of which have fast rail connections to London. Nearby Shrivenham and Watchfield offer various amenities, including shops, restaurants, pubs, and a doctor's surgery in Shrivenham. Additional facilities can be found in the nearby market towns of Faringdon and Wantage.









Floorplan

The Bungalow The Green, Longcot, Oxfordshire, SN7

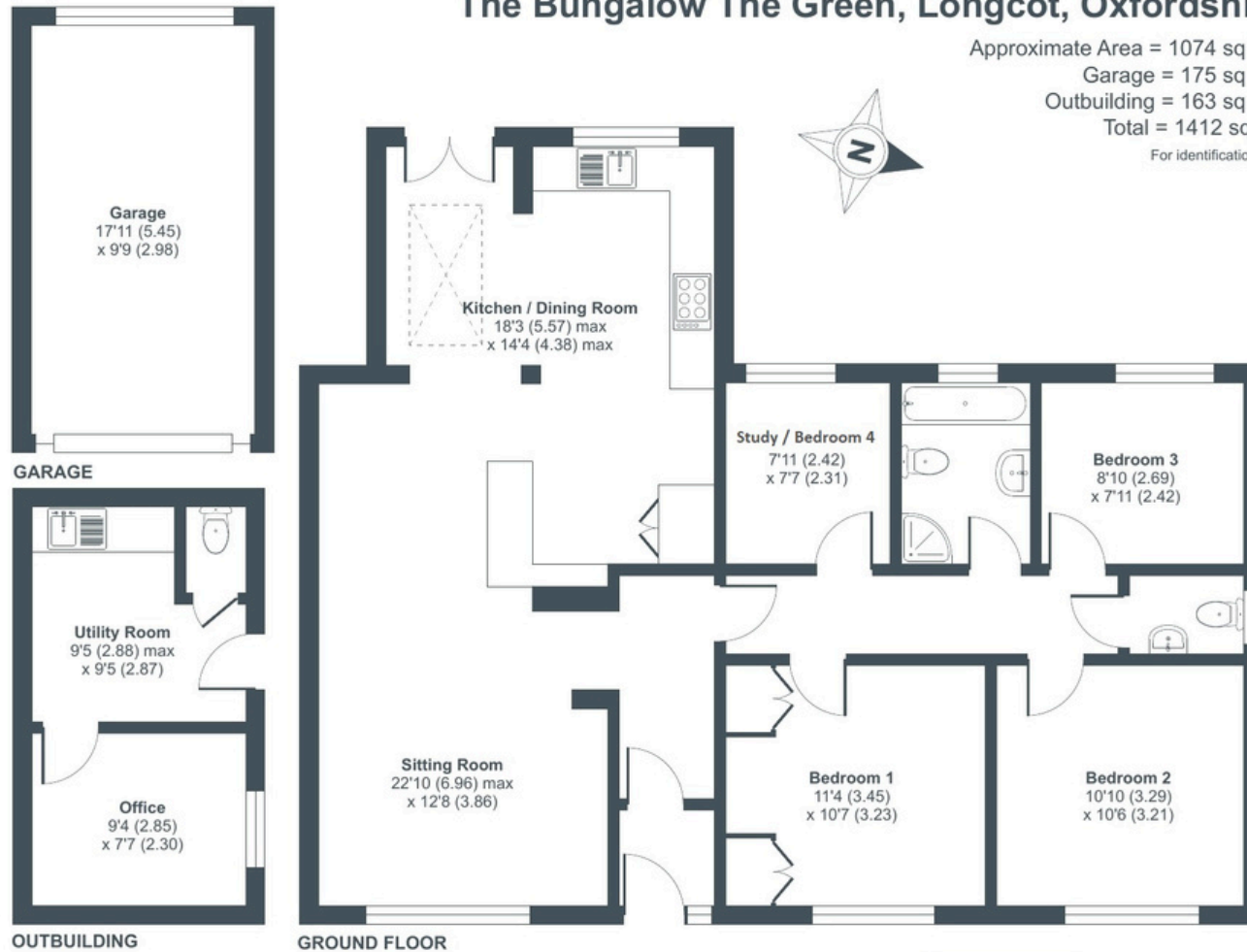
Approximate Area = 1074 sq ft / 99.7 sq m

Garage = 175 sq ft / 16.2 sq m

Outbuilding = 163 sq ft / 15.1 sq m

Total = 1412 sq ft / 131 sq m

For identification only - Not to scale



Floor plan produced in accordance with RICS Property Measurement Standards incorporating International Property Measurement Standards (IPMS2 Residential). © nlichecom 2024. Produced for Perry Bishop. REF: 1158170



01793 765 292

highworth@richardjames.uk

36 High Street | Highworth | SN6 7AQ

richard james

richardjames.uk