



15, Hurricane Drive, Calne, SN11 8GB

Guide Price £340,000

richard james

Village & Country Homes



Hurricane Drive

Calne

Freehold



This exceptional semi-detached townhouse is beautifully presented throughout and ideally situated within a short stroll of both the town's amenities and picturesque countryside. Designed for versatility, this four-bedroom home offers adaptable living spaces to suit a variety of needs.

Upon entering, the ground floor features a stylish, modern dining kitchen, a spacious living and dining area, a cloakroom, and ample storage. The first floor hosts three generously sized bedrooms, complemented by a well-appointed family bathroom. The second floor is dedicated to an impressive master suite, complete with a dressing area and a private en-suite.

Outside, the property boasts a fully enclosed, sun-drenched south-facing garden, along with a garage and a driveway. Presented in excellent condition, the home benefits from underfloor heating, double glazing, and gas central heating for year-round comfort.

Situated in the sought-after Rushes development by Barratt Homes, this property enjoys easy access to the town centre and its many amenities. To the north, routes lead towards Swindon and the M4 eastbound, while to the west, Chippenham and the M4 westbound are within reach. To the south, the area opens up to some of Wiltshire's most stunning countryside, offering scenic routes towards Devizes and Marlborough.

This home offers an ideal blend of modern convenience and countryside charm—an opportunity not to be missed!









richard
james



richard
james



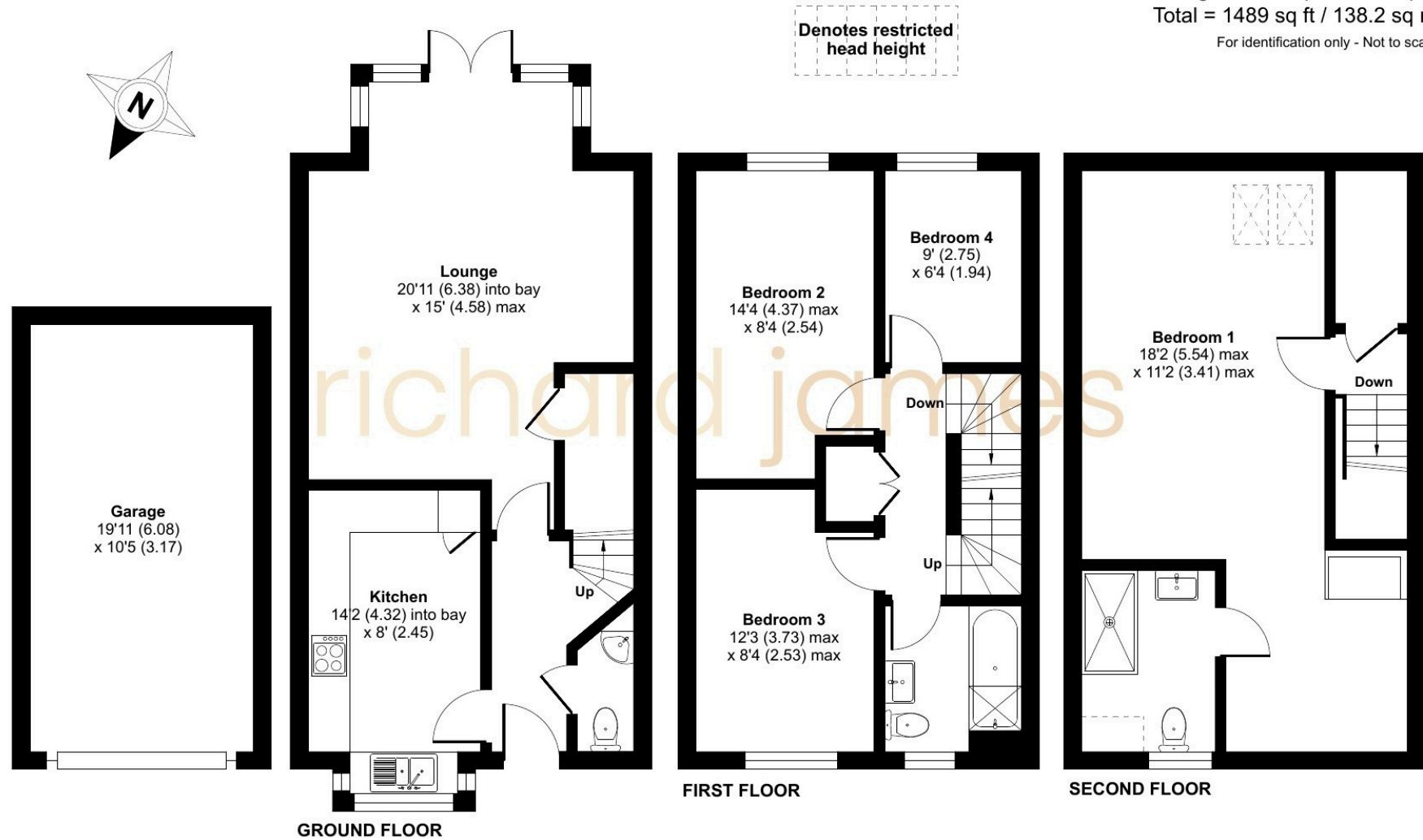
richard
james



richard
james

Floorplan

Limited Use Area(s) = 5 sq ft / 0.4 sq m
 Garage = 207 sq ft / 19.2 sq m
 Total = 1489 sq ft / 138.2 sq m
 For identification only - Not to scale



Floor plan produced in accordance with RICS Property Measurement 2nd Edition, Incorporating International Property Measurement Standards (IPMS2 Residential). © ncthecom 2025.

01793 855 117

rwb@richardjames.uk

139 High Street | Royal Wootton Bassett | SN4 7AY

richard james

richardjames.uk