



2 Kinsley Close, Tadpole Garden Village, Swindon, SN25 2UY

**Guide Price £550,000-£575,000**

**richard james**



## Kinsley Close

### Tadpole Garden Village

Freehold | EPC Rating - B



Situated in the highly sought-after Tadpole Garden Village, this modern four-bedroom detached home offers contemporary family living with picturesque views over green space to the front.

The heart of the home is to the rear, a spacious island kitchen diner, complete with sleek fittings, a utility room, and stunning bi-fold doors that open onto the rear garden, an ideal entertaining space.

The lounge is full width, while a separate study at the front of the home offers a quiet space for work or relaxation.

Upstairs, the impressive master suite boasts a dressing area and a luxurious four-piece en-suite. Three further well-proportioned bedrooms and a stylish family bathroom complete the first floor.

Externally, the property benefits from a good-sized rear garden, ideal for outdoor living, and a single garage to the side, offering convenience and storage.



With its stunning outlook, generous living space, and prime location, this home is a rare opportunity in Tadpole Garden Village.











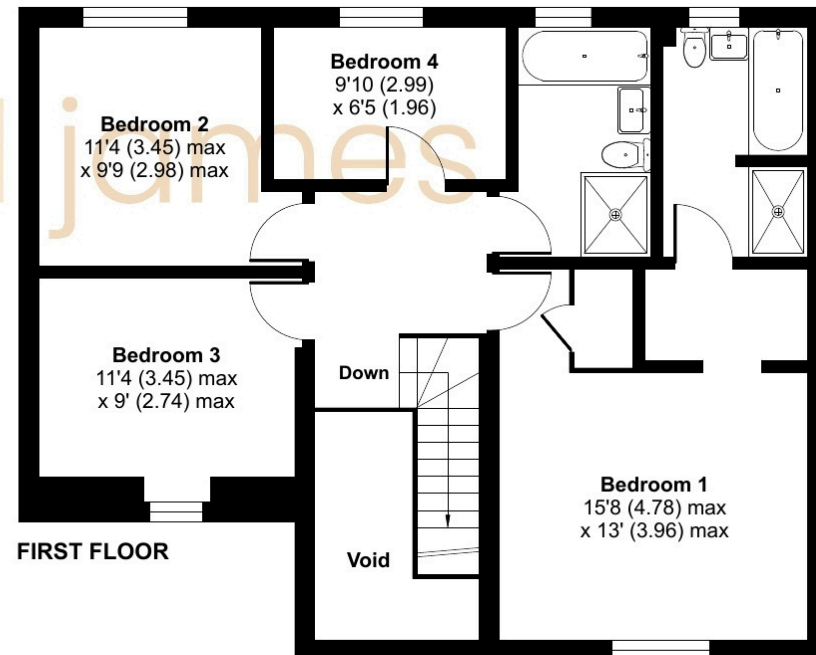
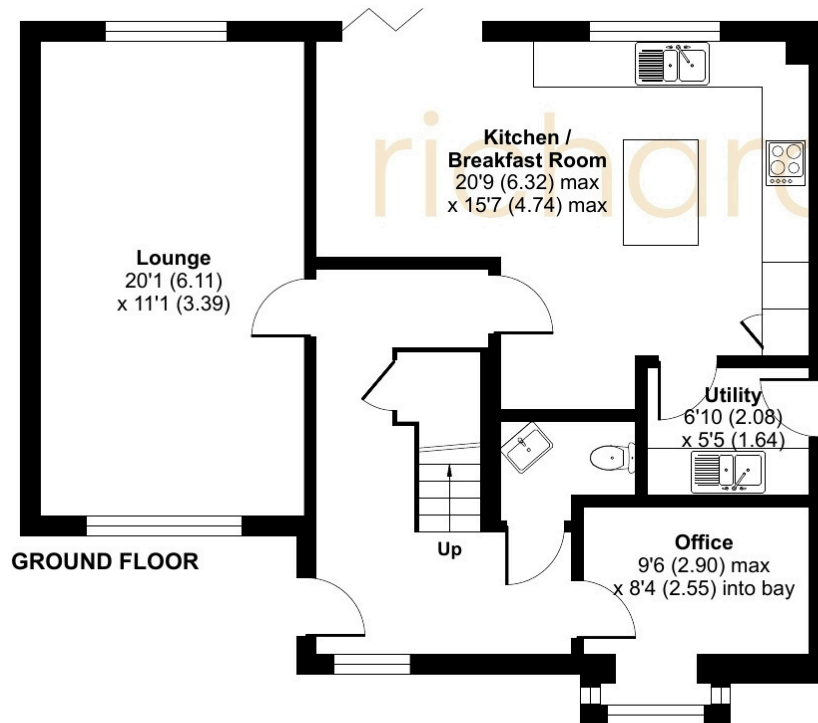
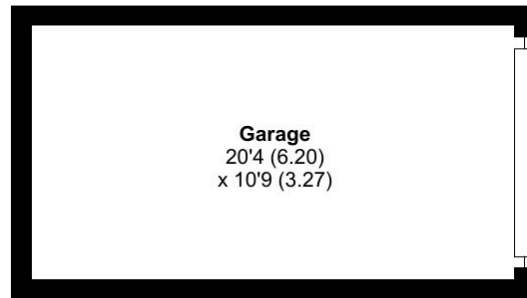
# Floorplan

Approximate Area = 1487 sq ft / 138.1 sq m (excludes void)

Garage = 218 sq ft / 20.3 sq m

Total = 1705 sq ft / 158.4 sq m

For identification only - Not to scale



07460 922 221

izzybowles@richardjames.uk

101 Victoria Road | Swindon | SN1 3BD

richard james

richardjames.uk