



155, Cloatley Crescent, Royal Wootton Bassett, SN4 7FX

**Guide Price £160,000**

**richard james**

Village & Country Homes

richard  
james



## Cloatley Crescent

Royal Wootton Bassett

Leasehold



Located in the heart of Royal Wootton Bassett, this beautifully presented two double-bedroom, second-floor apartment offers modern living with excellent convenience.

The property boasts a spacious open-plan lounge that seamlessly connects to a contemporary kitchen, complete with integrated white goods and space for a breakfast bar—ideal for relaxed dining or entertaining.

The main bedroom is a well-proportioned double with built-in wardrobes, while the second bedroom also offers generous space, making it perfect for guests, a home office, or additional storage. A stylish and modern bathroom with a shower over the bath completes the home.

Additional benefits include gas central heating and an allocated parking space for added ease.

Situated just five minutes from Junction 16 of the M4, this apartment is ideal for commuters and those who value accessibility. The property is also within a short walking distance of the bustling High Street, offering an array of supermarkets, restaurants, pubs, and other local amenities.

Welcome Home...





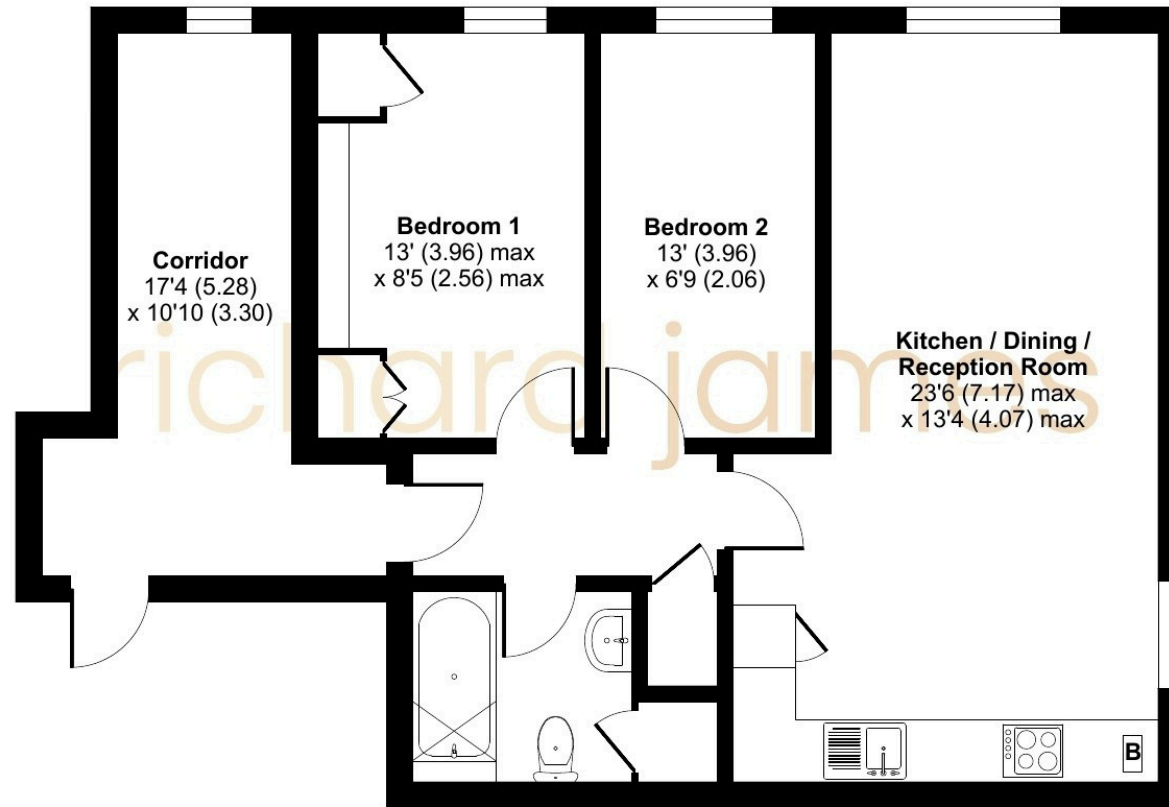


richard  
james



# Floorplan

For identification only - Not to scale



FIRST FLOOR

 Floor plan produced in accordance with RICS Property Measurement 2nd Edition, Incorporating International Property Measurement Standards (IPMS2 Residential). © nitchecom 2025.

**01793 855 117**

[rwb@richardjames.uk](mailto:rwb@richardjames.uk)

139 High Street | Royal Wootton Bassett | SN4 7AY

**richard james**

[richardjames.uk](http://richardjames.uk)